

**Product Name: PAK1 Rabbit Monoclonal Antibody**  
**Catalog #: AMRe02803**

---



## Summary

<b>Production Name</b>	PAK1 Rabbit Monoclonal Antibody
<b>Description</b>	Recombinant Rabbit Monoclonal antibody
<b>Host</b>	Rabbit
<b>Application</b>	WB,IHC-F,IHC-P,ICC/IF,IP
<b>Reactivity</b>	Human,Mouse,Rat,Hamster

## Performance

<b>Conjugation</b>	Unconjugated
<b>Modification</b>	Unmodified
<b>Isotype</b>	IgG
<b>Clonality</b>	Monoclonal Antibody
<b>Form</b>	Liquid
<b>Storage</b>	Store at 4°C short term. Aliquot and store at -20°C long term. Avoid freeze/thaw cycles.
<b>Buffer</b>	50mM Tris-Glycine(pH 7.4), 0.15M NaCl, 40% Glycerol, 0.01% Sodium azide and 0.05% BSA
<b>Purification</b>	Affinity Purified

## Immunogen

<b>Gene Name</b>	PAK1
<b>Alternative Names</b>	PAK1; Serine/threonine-protein kinase PAK 1; Alpha-PAK; p21-activated kinase 1; PAK-1; p65-PAK
<b>Gene ID</b>	5058
<b>SwissProt ID</b>	Q13153

## Application

<b>Dilution Ratio</b>	WB: 1/500-1/1000 IHC: 1/50-1/100 IF: 1/50-1/200 IP: 1/20
<b>Molecular Weight</b>	Calculated MW: 61 kDa; Observed MW: 61 kDa

**Product Name: PAK1 Rabbit Monoclonal Antibody**  
**Catalog #: AMRe02803**



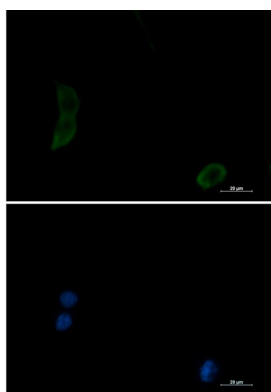
## Background

The activated kinase acts on a variety of targets. Likely to be the GTPase effector that links the Rho-related GTPases to the JNK MAP kinase pathway. Activated by CDC42 and RAC1. Involved in dissolution of stress fibers and reorganization of focal complexes. Involved in regulation of microtubule biogenesis through phosphorylation of TBCB.

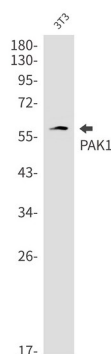
## Research Area

Cell Biology

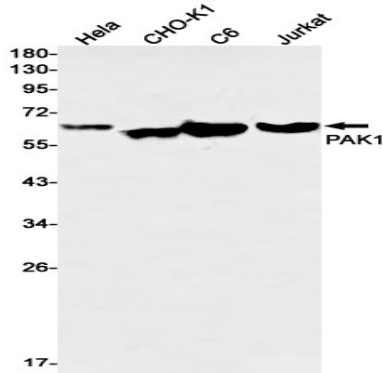
## Image Data



Immunocytochemistry analysis of PAK1 (green) in 3T3 using PAK1 antibody, and DAPI (blue).



Western blot analysis of PAK1 in 3T3 lysates using PAK1 antibody.

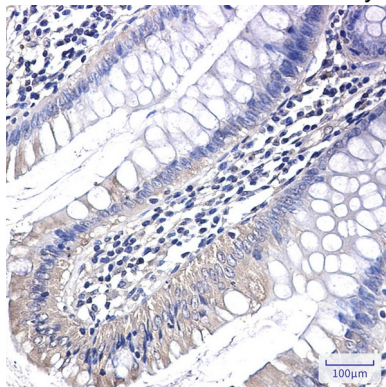


**Product Name: PAK1 Rabbit Monoclonal Antibody**  
**Catalog #: AMRe02803**

---



Western blot analysis of PAK1 in Hela, CHO-K1, C6, Jurkat lysates using PAK1 antibody



Immunohistochemistry analysis of paraffin-embedded Human colon cancer using PAK1 antibody. High-pressure and temperature Sodium Citrate pH 6.0 was used for antigen retrieval.

### **Note**

For research use only.