

Product Name: TIMELESS Rabbit Monoclonal Antibody
Catalog #: AMRe02691



Summary

Production Name	TIMELESS Rabbit Monoclonal Antibody
Description	Recombinant Rabbit Monoclonal antibody
Host	Rabbit
Application	WB,IHC-F,IHC-P,ICC/IF
Reactivity	Human

Performance

Conjugation	Unconjugated
Modification	Unmodified
Isotype	IgG
Clonality	Monoclonal Antibody
Form	Liquid
Storage	Store at 4°C short term. Aliquot and store at -20°C long term. Avoid freeze/thaw cycles.
Buffer	50mM Tris-Glycine(pH 7.4), 0.15M NaCl, 40% Glycerol, 0.01% Sodium azide and 0.05% BSA
Purification	Affinity Purified

Immunogen

Gene Name	TIMELESS
Alternative Names	hTIM; TIM; TIM1; Timeless; timeless circadian clock 1; TIMELESS1
Gene ID	8914
SwissProt ID	Q9UNS1

Application

Dilution Ratio	WB: 1/500-1/1000 IHC: 1/50-1/100 IF: 1/50-1/200
Molecular Weight	Calculated MW: 139 kDa; Observed MW: 150 kDa

Background

Product Name: TIMELESS Rabbit Monoclonal Antibody
Catalog #: AMRe02691

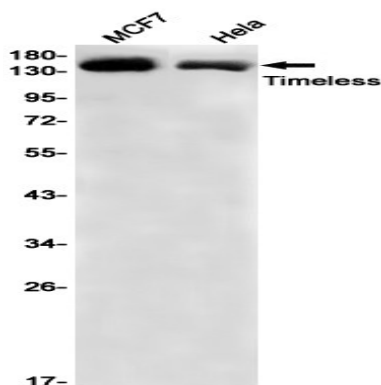


Required for normal progression of S-phase. Involved in the circadian rhythm autoregulatory loop. Negatively regulates CLOCK-NPAS2/BMAL1-induced transactivation of PER1 possibly via translocation of PER1 into the nucleus.

Research Area

Epigenetics and Nuclear Signaling

Image Data



Western blot analysis of Timeless in MCF-7, HeLa lysates using TIMELESS antibody.

Note

For research use only.