

---

## Summary

|                        |  |
|------------------------|--|
| <b>Production Name</b> | Tau Rabbit Monoclonal Antibody         |
| <b>Description</b>     | Recombinant Rabbit Monoclonal antibody |
| <b>Host</b>            | Rabbit                                 |
| <b>Application</b>     | WB,IP                                  |
| <b>Reactivity</b>      | Mouse,Rat                              |

## Performance

|                     |  |
|---------------------|--|
| <b>Conjugation</b>  | Unconjugated   |
| <b>Modification</b> | Unmodified   |
| <b>Isotype</b>      | IgG  |
| <b>Clonality</b>    | Monoclonal Antibody  |
| <b>Form</b>         | Liquid   |
| <b>Storage</b>      | Store at 4°C short term. Aliquot and store at -20°C long term. Avoid freeze/thaw cycles. |
| <b>Buffer</b>       | 50mM Tris-Glycine(pH 7.4), 0.15M NaCl, 40% Glycerol, 0.01% Sodium azide and 0.05% BSA    |
| <b>Purification</b> | Affinity Purified  |

## Immunogen

|                          |   |
|--------------------------|---|
| <b>Gene Name</b>         | MAPT  |
| <b>Alternative Names</b> | MAPT; MAPTL; MTBT1; TAU; Microtubule-associated protein tau; Neurofibrillary tangle protein; Paired helical filament-tau; PHF-tau |
| <b>Gene ID</b>           | 4137  |
| <b>SwissProt ID</b>      | P10636  |

## Application

|                         |   |
|-------------------------|---|
| <b>Dilution Ratio</b>   | WB: 1/500-1/1000 IP: 1/20                     |
| <b>Molecular Weight</b> | Calculated MW: 79 kDa; Observed MW: 50-80 kDa |

**Product Name: Tau Rabbit Monoclonal Antibody**  
**Catalog #: AMRe02670**



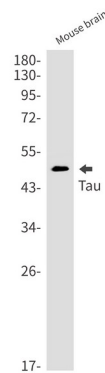
## Background

This gene encodes the microtubule-associated protein tau (MAPT) whose transcript undergoes complex, regulated alternative splicing, giving rise to several mRNA species. MAPT transcripts are differentially expressed in the nervous system, depending on stage of neuronal maturation and neuron type.

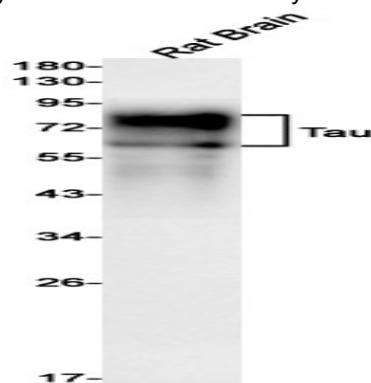
## Research Area

Neuroscience

## Image Data



Western blot analysis of Tau in mouse brain lysates using Tau antibody.



Western blot analysis of Tau in rat Brain lysates using Tau antibody.

## Note

For research use only.