

Summary

Production Name	STAT1 Rabbit Monoclonal Antibody
Description	Recombinant Rabbit Monoclonal antibody
Host	Rabbit
Application	WB,ICC/IF,IP
Reactivity	Human

Performance

Conjugation	Unconjugated
Modification	Unmodified
Isotype	IgG
Clonality	Monoclonal Antibody
Form	Liquid
Storage	Store at 4°C short term. Aliquot and store at -20°C long term. Avoid freeze/thaw cycles.
Buffer	50mM Tris-Glycine(pH 7.4), 0.15M NaCl, 40% Glycerol, 0.01% Sodium azide and 0.05% BSA
Purification	Affinity Purified

Immunogen

Gene Name	STAT1
Alternative Names	STAT1; Signal transducer and activator of transcription 1-alpha/beta; Transcription factor ISGF-3 components p91/p84
Gene ID	6772
SwissProt ID	P42224

Application

Dilution Ratio	WB: 1/500-1/1000 IF: 1/50-1/200 IP: 1/20
Molecular Weight	Calculated MW: 87 kDa; Observed MW: 87 kDa

Product Name: STAT1 Rabbit Monoclonal Antibody
Catalog #: AMRe02637



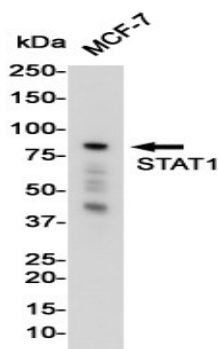
Background

The protein encoded by this gene is a member of the STAT protein family. In response to cytokines and growth factors, STAT family members are phosphorylated by the receptor associated kinases, and then form homo- or heterodimers that translocate to the cell nucleus where they act as transcription activators.

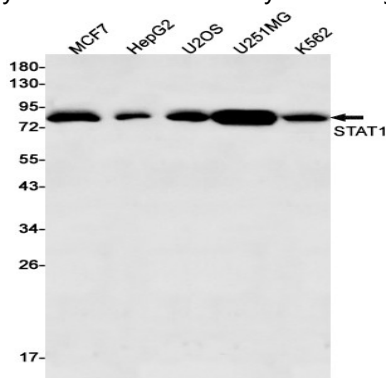
Research Area

Signal Transduction

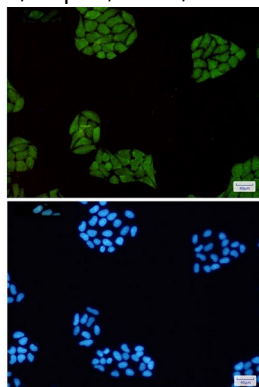
Image Data



Western blot analysis of STAT1 in MCF-7 lysates using STAT1 antibody.



Western blot analysis of STAT1 in MCF-7, HepG2, U2OS, U251MG, K562 lysates using STAT1 antibody.



Product Name: STAT1 Rabbit Monoclonal Antibody
Catalog #: AMRe02637



Immunocytochemistry analysis of STAT1(green) in Hela using STAT1 antibody,and DAPI(blue)

Note

For research use only.