

**Product Name: SSX2IP Rabbit Monoclonal Antibody**  
**Catalog #: AMRe02636**



## Summary

<b>Production Name</b>	SSX2IP Rabbit Monoclonal Antibody
<b>Description</b>	Recombinant Rabbit Monoclonal antibody
<b>Host</b>	Rabbit
<b>Application</b>	WB,IHC-F,IHC-P,ICC/IF
<b>Reactivity</b>	Human,Rat

## Performance

<b>Conjugation</b>	Unconjugated
<b>Modification</b>	Unmodified
<b>Isotype</b>	IgG
<b>Clonality</b>	Monoclonal Antibody
<b>Form</b>	Liquid
<b>Storage</b>	Store at 4°C short term. Aliquot and store at -20°C long term. Avoid freeze/thaw cycles.
<b>Buffer</b>	50mM Tris-Glycine(pH 7.4), 0.15M NaCl, 40% Glycerol, 0.01% Sodium azide and 0.05% BSA
<b>Purification</b>	Affinity Purified

## Immunogen

<b>Gene Name</b>	SSX2IP
<b>Alternative Names</b>	ADIP; hMsd1
<b>Gene ID</b>	117178
<b>SwissProt ID</b>	Q9Y2D8

## Application

<b>Dilution Ratio</b>	WB: 1/500-1/1000 IHC: 1/50-1/100 IF: 1/50-1/200
<b>Molecular Weight</b>	Calculated MW: 71 kDa; Observed MW: 71 kDa

## Background

**Product Name: SSX2IP Rabbit Monoclonal Antibody**  
**Catalog #: AMRe02636**

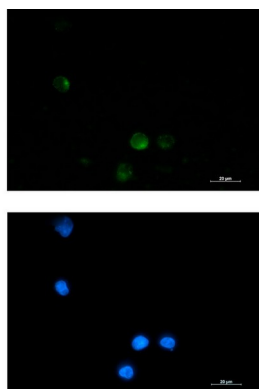


Belongs to an adhesion system, which plays a role in the organization of homotypic, interneuronal and heterotypic cell-cell adherens junctions (AJs). May connect the nectin-afadin and E-cadherin-catenin system through alpha-actinin and may be involved in organization of the actin cytoskeleton at AJs through afadin and alpha-actinin . Involved in cell movement: localizes at the leading edge of moving cells in response to PDGF and is required for the formation of the leading edge and the promotion of cell movement, possibly via activation of Rac signaling . Acts as a centrosome maturation factor, probably by maintaining the integrity of the pericentriolar material and proper microtubule nucleation at mitotic spindle poles. The function seems to implicate at least in part WRAP73; the SSX2IP:WRAP73 complex is proposed to act as regulator of spindle anchoring at the mitotic centrosome (PubMed:23816619, PubMed:26545777). Involved in ciliogenesis (PubMed:24356449). It is required for targeted recruitment of the BBSome, CEP290, RAB8, and SSTR3 to the cilia (PubMed:24356449).

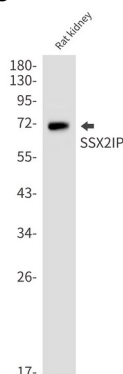
## Research Area

Tags & Cell Markers

## Image Data

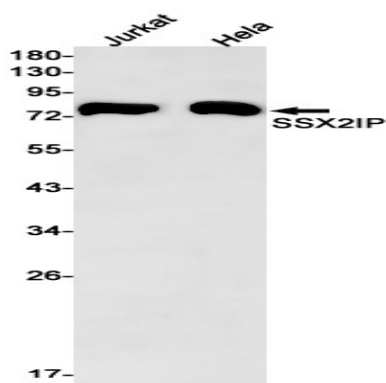


Immunocytochemistry analysis of SSX2IP (green) in K562 using SSX2IP antibody, and DAPI (blue).

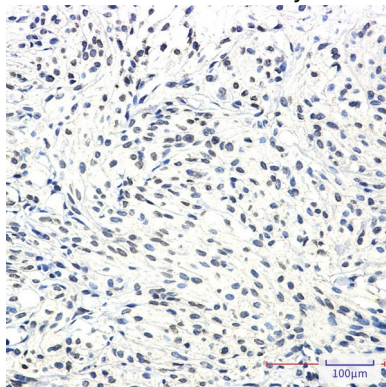


Western blot analysis of SSX2IP in rat kidney lysates using SSX2IP antibody.

**Product Name: SSX2IP Rabbit Monoclonal Antibody**  
**Catalog #: AMRe02636**



Western blot analysis of SSX2IP in Jurkat, HeLa lysates using SSX2IP antibody



Immunohistochemistry analysis of paraffin-embedded Human Brain using SSX2IP antibody. High-pressure and temperature Sodium Citrate pH 6.0 was used for antigen retrieval.

## **Note**

For research use only.