

## Summary

<b>Production Name</b>	SP1 Rabbit Monoclonal Antibody
<b>Description</b>	Recombinant Rabbit Monoclonal antibody
<b>Host</b>	Rabbit
<b>Application</b>	WB,IHC-F,IHC-P,ICC/IF,IP
<b>Reactivity</b>	Human

## Performance

<b>Conjugation</b>	Unconjugated
<b>Modification</b>	Unmodified
<b>Isotype</b>	IgG
<b>Clonality</b>	Monoclonal Antibody
<b>Form</b>	Liquid
<b>Storage</b>	Store at 4°C short term. Aliquot and store at -20°C long term. Avoid freeze/thaw cycles.
<b>Buffer</b>	50mM Tris-Glycine(pH 7.4), 0.15M NaCl, 40% Glycerol, 0.01% Sodium azide and 0.05% BSA
<b>Purification</b>	Affinity Purified

## Immunogen

<b>Gene Name</b>	SP1
<b>Alternative Names</b>	SP1; TSFP1; Transcription factor Sp1
<b>Gene ID</b>	6667
<b>SwissProt ID</b>	P08047

## Application

<b>Dilution Ratio</b>	WB: 1/500-1/1000 IHC: 1/50-1/100 IF: 1/50-1/200 IP: 1/20
<b>Molecular Weight</b>	Calculated MW: 81 kDa; Observed MW: 90 kDa

## Background

**Product Name: SP1 Rabbit Monoclonal Antibody**  
**Catalog #: AMRe02629**

---

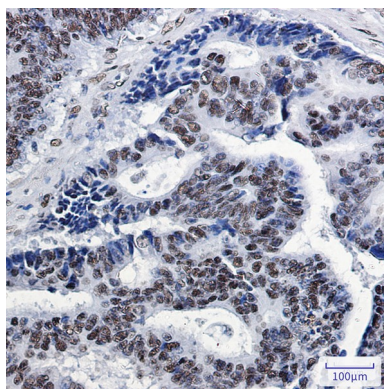


SP1 is a transcription factor of the Sp1 C2H2-type zinc-finger protein family. Phosphorylated and activated by MAPK. Dephosphorylation by PTEN inhibits DNA binding. Binds to p38 in the nucleus.

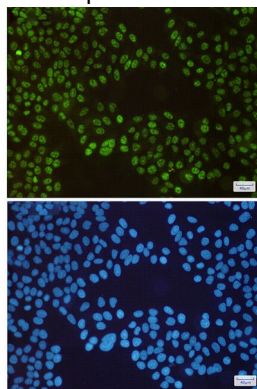
## Research Area

Epigenetics and Nuclear Signaling

## Image Data



Immunohistochemistry analysis of paraffin-embedded Human colon cancer using SP1 antibody. High-pressure and temperature Sodium Citrate pH 6.0 was used for antigen retrieval.



Immunocytochemistry analysis of SP1 (green) in HeLa using SP1 antibody, and DAPI (blue)

## Note

For research use only.