

Product Name: SMARCB1 Rabbit Monoclonal Antibody
Catalog #: AMRe02621



Summary

Production Name	SMARCB1 Rabbit Monoclonal Antibody
Description	Recombinant Rabbit Monoclonal antibody
Host	Rabbit
Application	WB,IHC-F,IHC-P,ICC/IF,IP
Reactivity	Human,Mouse

Performance

Conjugation	Unconjugated
Modification	Unmodified
Isotype	IgG
Clonality	Monoclonal Antibody
Form	Liquid
Storage	Store at 4°C short term. Aliquot and store at -20°C long term. Avoid freeze/thaw cycles.
Buffer	50mM Tris-Glycine(pH 7.4), 0.15M NaCl, 40% Glycerol, 0.01% Sodium azide and 0.05% BSA
Purification	Affinity Purified

Immunogen

Gene Name	SMARCB1
Alternative Names	SMARCB1; BAF47; hSNF5; INI1; RDT; RTPS1; Sfh1p; SMARCB1; SNF5 homolog; SNF5L1; Snr1; SWI/SNF comp
Gene ID	6598
SwissProt ID	Q12824

Application

Dilution Ratio	WB: 1/500-1/1000 IHC: 1/50-1/100 IF: 1/50-1/200 IP: 1/20
Molecular Weight	Calculated MW: 44 kDa; Observed MW: 44 kDa

Product Name: SMARCB1 Rabbit Monoclonal Antibody
Catalog #: AMRe02621



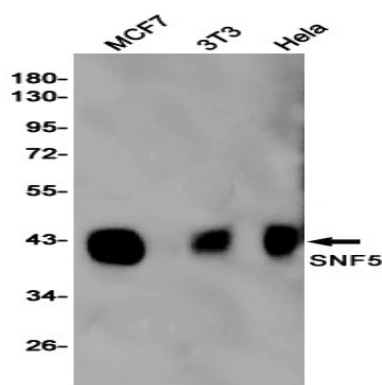
Background

The SWI-SNF complex is involved in the activation of transcription via the remodeling of nucleosome structure in an ATP-dependent manner. Brm (also designated SNF2 α) and Brg-1 (also designated SNF2 β) are the ATPase subunits of the mammalian SWI-SNF complex.

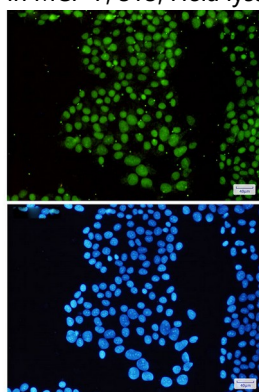
Research Area

Epigenetics and Nuclear Signaling

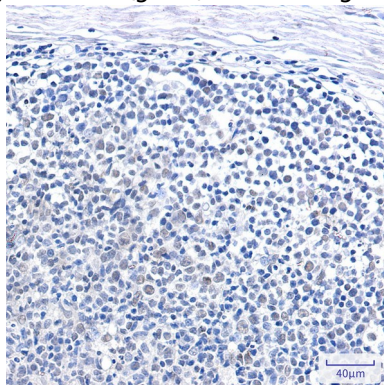
Image Data



Western blot analysis of SNF5 in MCF-7, 3T3, HeLa lysates using SMARCB1 antibody.



Immunocytochemistry analysis of SNF5(green) in HeLa using SNF5 antibody, and DAPI(blue)



Product Name: SMARCB1 Rabbit Monoclonal Antibody
Catalog #: AMRe02621



Immunohistochemistry analysis of paraffin-embedded Human tonsil using SNF5 antibody. High-pressure and temperature Sodium Citrate pH 6.0 was used for antigen retrieval.

Note

For research use only.