

**Product Name: Secretory Phospholipase A2 Rabbit  
Monoclonal Antibody  
Catalog #: AMRe02582**

---



## Summary

<b>Production Name</b>	Secretory Phospholipase A2 Rabbit Monoclonal Antibody
<b>Description</b>	Recombinant Rabbit Monoclonal antibody
<b>Host</b>	Rabbit
<b>Application</b>	WB
<b>Reactivity</b>	Human,Mouse,Rat

## Performance

<b>Conjugation</b>	Unconjugated
<b>Modification</b>	Unmodified
<b>Isotype</b>	IgG
<b>Clonality</b>	Monoclonal Antibody
<b>Form</b>	Liquid
<b>Storage</b>	Store at 4°C short term. Aliquot and store at -20°C long term. Avoid freeze/thaw cycles.
<b>Buffer</b>	50mM Tris-Glycine(pH 7.4), 0.15M NaCl, 40% Glycerol, 0.01% Sodium azide and 0.05% BSA
<b>Purification</b>	Affinity Purified

## Immunogen

<b>Gene Name</b>	PLA2G2A
<b>Alternative Names</b>	MOM1; PLA2; PLA2B; PLA2L; PLA2S; PLAS1; sPLA2
<b>Gene ID</b>	5320
<b>SwissProt ID</b>	P14555

## Application

<b>Dilution Ratio</b>	WB: 1/500-1/1000
<b>Molecular Weight</b>	Calculated MW: 16 kDa; Observed MW: 16 kDa

**Product Name: Secretory Phospholipase A2 Rabbit  
Monoclonal Antibody**  
**Catalog #: AMRe02582**



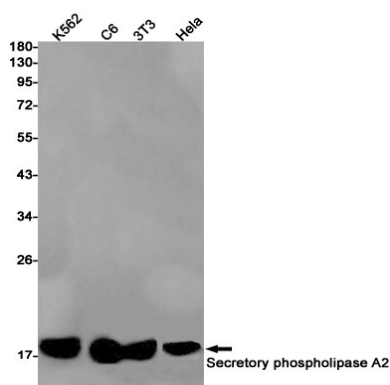
## Background

Thought to participate in the regulation of the phospholipid metabolism in biomembranes including eicosanoid biosynthesis. Catalyzes the calcium-dependent hydrolysis of the 2-acyl groups in 3-sn-phosphoglycerides.

## Research Area

Signal Transduction

## Image Data



Western blot analysis of Secretory Phospho-lipase A2 in K562, C6, 3T3, HeLa lysates using Secretory Phospho-lipase A2 antibody.

## Note

For research use only.