

Product Name: SCARB1 Rabbit Monoclonal Antibody
Catalog #: AMRe02576



Summary

Production Name	SCARB1 Rabbit Monoclonal Antibody
Description	Recombinant Rabbit Monoclonal antibody
Host	Rabbit
Application	WB
Reactivity	Human,Mouse,Rat

Performance

Conjugation	Unconjugated
Modification	Unmodified
Isotype	IgG
Clonality	Monoclonal Antibody
Form	Liquid
Storage	Store at 4°C short term. Aliquot and store at -20°C long term. Avoid freeze/thaw cycles.
Buffer	50mM Tris-Glycine(pH 7.4), 0.15M NaCl, 40% Glycerol, 0.01% Sodium azide and 0.05% BSA
Purification	Affinity Purified

Immunogen

Gene Name	SCARB1
Alternative Names	CLA1; SRB1; CLA-1; SR-BI; CD36L1; HDLQTL6; Scavenging Receptor SR-BI
Gene ID	949
SwissProt ID	Q8WTV0

Application

Dilution Ratio	WB: 1/500-1/1000
Molecular Weight	Calculated MW: 61 kDa; Observed MW: 80 kDa

Background

Product Name: SCARB1 Rabbit Monoclonal Antibody
Catalog #: AMRe02576

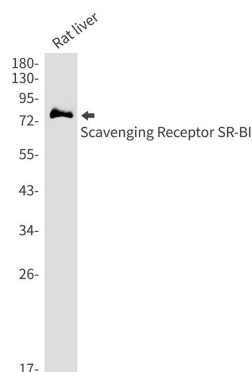


Receptor for different ligands such as phospholipids, cholesterol ester, lipoproteins, phosphatidylserine and apoptotic cells. Probable receptor for HDL, located in particular region of the plasma membrane, called caveolae. Facilitates the flux of free and esterified cholesterol between the cell surface and extracellular donors and acceptors, such as HDL and to a lesser extent, apoB-containing lipoproteins and modified lipoproteins.

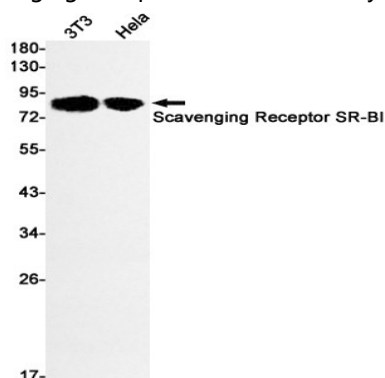
Research Area

Microbiology

Image Data



Western blot analysis of Scavenging Receptor SRBI in rat liver lysates using SCARB1 antibody.



Western blot analysis of Scavenging Receptor SRBI in 3T3, Hela lysates using Scavenging Receptor SRBI antibody.

Note

For research use only.