

**Product Name: SCARB1 Rabbit Monoclonal Antibody**  
**Catalog #: AMRe02575**



## Summary

<b>Production Name</b>	SCARB1 Rabbit Monoclonal Antibody
<b>Description</b>	Recombinant Rabbit Monoclonal antibody
<b>Host</b>	Rabbit
<b>Application</b>	WB,IP
<b>Reactivity</b>	Human,Mouse

## Performance

<b>Conjugation</b>	Unconjugated
<b>Modification</b>	Unmodified
<b>Isotype</b>	IgG
<b>Clonality</b>	Monoclonal Antibody
<b>Form</b>	Liquid
<b>Storage</b>	Store at 4°C short term. Aliquot and store at -20°C long term. Avoid freeze/thaw cycles.
<b>Buffer</b>	50mM Tris-Glycine(pH 7.4), 0.15M NaCl, 40% Glycerol, 0.01% Sodium azide and 0.05% BSA
<b>Purification</b>	Affinity Purified

## Immunogen

<b>Gene Name</b>	SCARB1
<b>Alternative Names</b>	CLA1; SRB1; CLA-1; SR-BI; CD36L1; HDLQTL6; Scavenging Receptor SR-BI
<b>Gene ID</b>	949
<b>SwissProt ID</b>	Q8WTV0

## Application

<b>Dilution Ratio</b>	WB: 1/500-1/1000 IP: 1/20
<b>Molecular Weight</b>	Calculated MW: 61 kDa; Observed MW: 80 kDa

## Background

**Product Name: SCARB1 Rabbit Monoclonal Antibody**  
**Catalog #: AMRe02575**

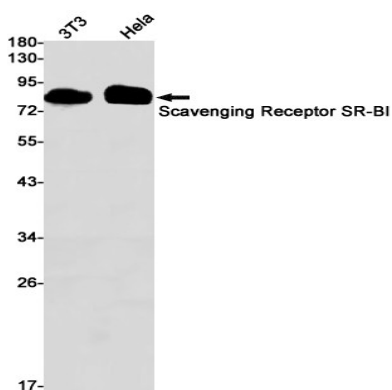


Receptor for different ligands such as phospholipids, cholesterol ester, lipoproteins, phosphatidylserine and apoptotic cells. Probable receptor for HDL, located in particular region of the plasma membrane, called caveolae. Facilitates the flux of free and esterified cholesterol between the cell surface and extracellular donors and acceptors, such as HDL and to a lesser extent, apoB-containing lipoproteins and modified lipoproteins.

## Research Area

Microbiology

## Image Data



Western blot analysis of Scavenging Receptor SRBI in 3T3, HeLa lysates using SCARB1 antibody.

## Note

For research use only.