

**Product Name: Exocyst Complex Component 3 Rabbit
Monoclonal Antibody
Catalog #: AMRe02558**



Summary

Production Name	Exocyst Complex Component 3 Rabbit Monoclonal Antibody
Description	Recombinant Rabbit Monoclonal antibody
Host	Rabbit
Application	WB, ICC/IF, IP
Reactivity	Human, Mouse, Rat

Performance

Conjugation	Unconjugated
Modification	Unmodified
Isotype	IgG
Clonality	Monoclonal Antibody
Form	Liquid
Storage	Store at 4°C short term. Aliquot and store at -20°C long term. Avoid freeze/thaw cycles.
Buffer	50mM Tris-Glycine(pH 7.4), 0.15M NaCl, 40% Glycerol, 0.01% Sodium azide and 0.05% BSA
Purification	Affinity Purified

Immunogen

Gene Name	EXOC3
Alternative Names	SEC6; Sec6p; SEC6L1
Gene ID	11336
SwissProt ID	O60645

Application

Dilution Ratio	WB: 1/500-1/1000 IF: 1/50-1/200 IP: 1/20
Molecular Weight	Calculated MW: 86 kDa; Observed MW: 86 kDa

**Product Name: Exocyst Complex Component 3 Rabbit
Monoclonal Antibody**
Catalog #: AMRe02558



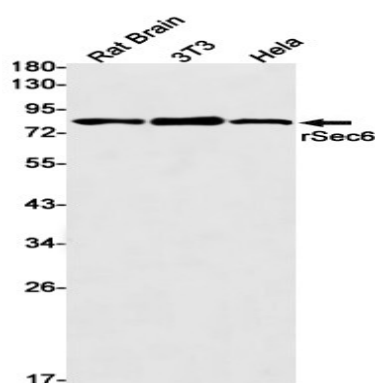
Background

Component of the exocyst complex involved in the docking of exocytic vesicles with fusion sites on the plasma membrane.

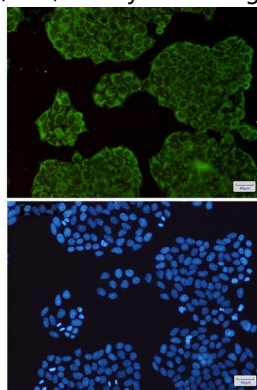
Research Area

Signal Transduction

Image Data



Western blot analysis of rSec6 in rat Brain, 3T3, HeLa lysates using Exocyst Complex Component 3 antibody.



Immunocytochemistry analysis of rSec6(green) in HeLa using rSec6 antibody, and DAPI(blue)

Note

For research use only.