

Summary

Production Name	RBX1 Rabbit Monoclonal Antibody
Description	Recombinant Rabbit Monoclonal antibody
Host	Rabbit
Application	WB,IHC-F,IHC-P,ICC/IF,IP
Reactivity	Human,Mouse,Rat

Performance

Conjugation	Unconjugated
Modification	Unmodified
Isotype	IgG
Clonality	Monoclonal Antibody
Form	Liquid
Storage	Store at 4°C short term. Aliquot and store at -20°C long term. Avoid freeze/thaw cycles.
Buffer	50mM Tris-Glycine(pH 7.4), 0.15M NaCl, 40% Glycerol, 0.01% Sodium azide and 0.05% BSA
Purification	Affinity Purified

Immunogen

Gene Name	RBX1
Alternative Names	ROC1; RNF75; BA554C12.1
Gene ID	9978
SwissProt ID	P62877

Application

Dilution Ratio	WB: 1/500-1/1000 IHC: 1/50-1/100 IF: 1/50-1/200 IP: 1/20
Molecular Weight	Calculated MW: 12 kDa; Observed MW: 12 kDa

Background

Product Name: RBX1 Rabbit Monoclonal Antibody
Catalog #: AMRe02546

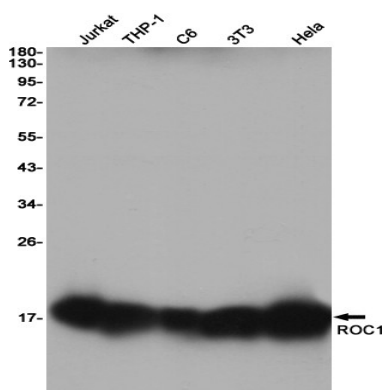


E3 ubiquitin ligase component of multiple cullin-RING-based E3 ubiquitin-protein ligase complexes which mediate the ubiquitination and subsequent proteasomal degradation of target proteins, including proteins involved in cell cycle progression, signal transduction, transcription and transcription-coupled nucleotide excision repair.

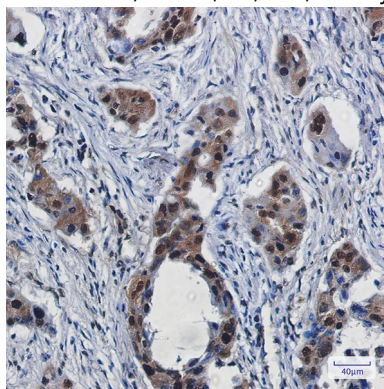
Research Area

Cell Biology

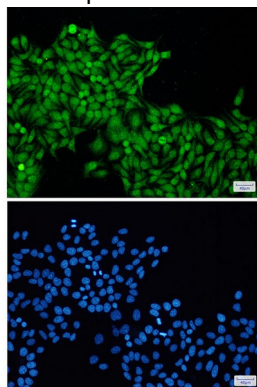
Image Data



Western blot analysis of ROC1 in Jurkat, THP-1, C6, 3T3, HeLa lysates using RBX1 antibody.



Immunohistochemistry analysis of paraffin-embedded Human lung cancer using ROC1 antibody. High-pressure and temperature Sodium Citrate pH 6.0 was used for antigen retrieval.



Product Name: RBX1 Rabbit Monoclonal Antibody
Catalog #: AMRe02546



Immunocytochemistry analysis of ROC1(green) in Hela using ROC1 antibody,and DAPI(blue)

Note

For research use only.