

Product Name: RKIP Rabbit Monoclonal Antibody
Catalog #: AMRe02544



Summary

| | |
|------------------------|--|
| Production Name | RKIP Rabbit Monoclonal Antibody |
| Description | Recombinant Rabbit Monoclonal antibody |
| Host | Rabbit |
| Application | WB,IHC-P,IP |
| Reactivity | Human,Mouse,Rat |

Performance

| | |
|---------------------|--|
| Conjugation | Unconjugated |
| Modification | Unmodified |
| Isotype | IgG |
| Clonality | Monoclonal Antibody |
| Form | Liquid |
| Storage | Store at 4°C short term. Aliquot and store at -20°C long term. Avoid freeze/thaw cycles. |
| Buffer | 50mM Tris-Glycine(pH 7.4), 0.15M NaCl, 40% Glycerol, 0.01% Sodium azide and 0.05% BSA |
| Purification | Affinity Purified |

Immunogen

| | |
|--------------------------|--|
| Gene Name | PEBP1 |
| Alternative Names | PEBP1; PBP; PEBP; Phosphatidylethanolamine-binding protein 1; PEBP-1; HCNPPp; Neuropolypeptide h3; Prostatic-binding protein; Raf kinase inhibitor protein; RKIP |
| Gene ID | 5037 |
| SwissProt ID | P30086 |

Application

| | |
|-------------------------|--|
| Dilution Ratio | WB: 1/500-1/1000 IHC: 1/50-1/100 IP: 1/20 |
| Molecular Weight | Calculated MW: 21 kDa; Observed MW: 21 kDa |

Product Name: RKIP Rabbit Monoclonal Antibody
Catalog #: AMRe02544



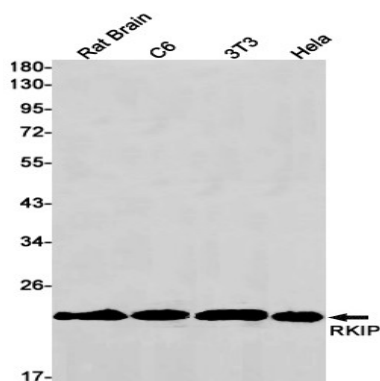
Background

Raf kinase inhibitor protein (RKIP) is a member of the phosphatidylethanolamine-binding protein (PEBP) family that associates with Raf-1 and the MEK and MAP kinases. RKIP has been shown to complex with Raf-1, MEK, and ERK. Although MEK and ERK can simultaneously bind RKIP, the association between Raf-1 and RKIP and that of RKIP and MEK are mutually exclusive. Thus, RKIP competitively disrupts the Raf-1-MEK complex and effectively terminates signal transmission from Raf-1 to MAP kinases.

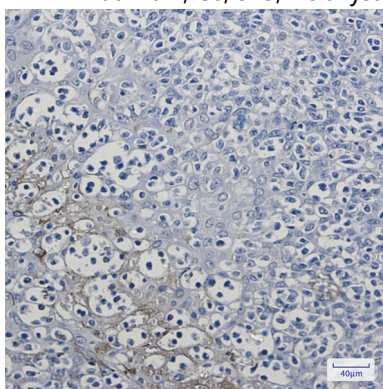
Research Area

Immunology

Image Data



Western blot analysis of RKIP in rat Brain, C6, 3T3, HeLa lysates using RKIP antibody.



Immunohistochemistry analysis of paraffin-embedded Human tonsil using RKIP antibody. High-pressure and temperature Sodium Citrate pH 6.0 was used for antigen retrieval.

Note

For research use only.