

**Product Name: REA Rabbit Monoclonal Antibody**  
**Catalog #: AMRe02534**



## Summary

<b>Production Name</b>	REA Rabbit Monoclonal Antibody
<b>Description</b>	Recombinant Rabbit Monoclonal antibody
<b>Host</b>	Rabbit
<b>Application</b>	WB,IHC-F,IHC-P,ICC/IF
<b>Reactivity</b>	Human,Mouse,Rat

## Performance

<b>Conjugation</b>	Unconjugated
<b>Modification</b>	Unmodified
<b>Isotype</b>	IgG
<b>Clonality</b>	Monoclonal Antibody
<b>Form</b>	Liquid
<b>Storage</b>	Store at 4°C short term. Aliquot and store at -20°C long term. Avoid freeze/thaw cycles.
<b>Buffer</b>	50mM Tris-Glycine(pH 7.4), 0.15M NaCl, 40% Glycerol, 0.01% Sodium azide and 0.05% BSA
<b>Purification</b>	Affinity Purified

## Immunogen

<b>Gene Name</b>	PHB2
<b>Alternative Names</b>	BAP; Bap37; BCAP 37; D prohibitin; p22; Phb2; PNAS 141; Prohibitin 2
<b>Gene ID</b>	11331
<b>SwissProt ID</b>	Q99623

## Application

<b>Dilution Ratio</b>	WB: 1/500-1/1000 IHC: 1/50-1/100 IF: 1/50-1/200
<b>Molecular Weight</b>	Calculated MW: 33 kDa; Observed MW: 33 kDa

## Background

**Product Name: REA Rabbit Monoclonal Antibody**  
**Catalog #: AMRe02534**

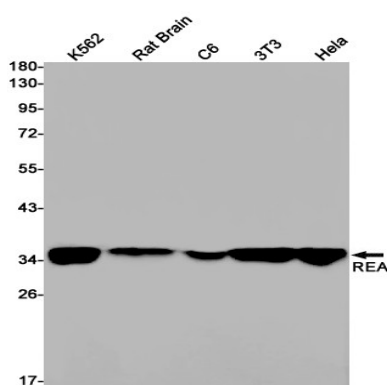


Acts as a mediator of transcriptional repression by nuclear hormone receptors via recruitment of histone deacetylases (By similarity). Functions as an estrogen receptor (ER)-selective coregulator that potentiates the inhibitory activities of antiestrogens and represses the activity of estrogens.

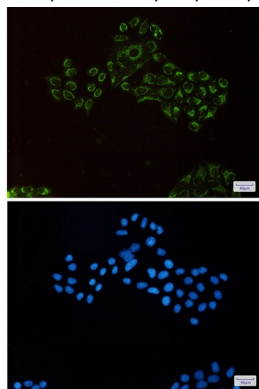
## Research Area

Signal Transduction

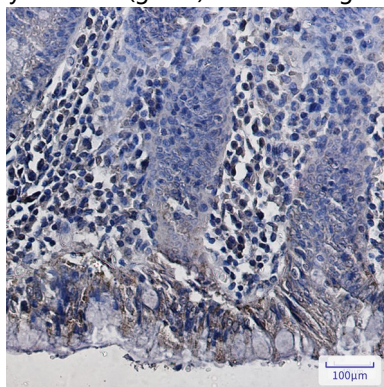
## Image Data



Western blot analysis of REA in K562, rat Brain, C6, 3T3, HeLa lysates using REA antibody.



Immunocytochemistry analysis of REA(green) in HeLa using REA antibody, and DAPI(blue)



Immunohistochemistry analysis of paraffin-embedded Human colon cancer using REA antibody. High-pressure and

**Product Name: REA Rabbit Monoclonal Antibody**  
**Catalog #: AMRe02534**

---



temperature Sodium Citrate pH 6.0 was used for antigen retrieval.

**Note**

For research use only.