

Summary

Production Name	SPI1 Rabbit Monoclonal Antibody
Description	Recombinant Rabbit Monoclonal antibody
Host	Rabbit
Application	WB,IHC-P
Reactivity	Human,Mouse

Performance

Conjugation	Unconjugated
Modification	Unmodified
Isotype	IgG
Clonality	Monoclonal Antibody
Form	Liquid
Storage	Store at 4°C short term. Aliquot and store at -20°C long term. Avoid freeze/thaw cycles.
Buffer	50mM Tris-Glycine(pH 7.4), 0.15M NaCl, 40% Glycerol, 0.01% Sodium azide and 0.05% BSA
Purification	Affinity Purified

Immunogen

Gene Name	SPI1
Alternative Names	SPI1; Transcription factor PU.1; 31 kDa-transforming protein
Gene ID	6688
SwissProt ID	P17947

Application

Dilution Ratio	WB: 1/500-1/1000 IHC: 1/50-1/100
Molecular Weight	Calculated MW: 31 kDa; Observed MW: 42 kDa

Background

Product Name: SPI1 Rabbit Monoclonal Antibody
Catalog #: AMRe02497

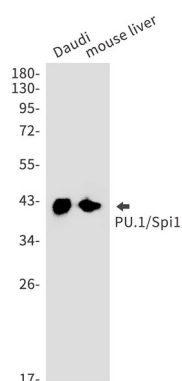


Binds to the PU-box, a purine-rich DNA sequence (5'-GAGGAA-3') that can act as a lymphoid-specific enhancer. This protein is a transcriptional activator that may be specifically involved in the differentiation or activation of macrophages or B-cells. Also binds RNA and may modulate pre-mRNA splicing.

Research Area

Immunology

Image Data



Western blot analysis of PU.1/Spi1 in Daudi, mouse liver lysates using SPI1 antibody.

Note

For research use only.