

Product Name: Proteasome alpha 2 Rabbit Monoclonal Antibody
Catalog #: AMRe02479



Summary

Production Name	Proteasome alpha 2 Rabbit Monoclonal Antibody
Description	Recombinant Rabbit Monoclonal antibody
Host	Rabbit
Application	WB,IHC-F,IHC-P,ICC/IF
Reactivity	Human,Mouse,Rat

Performance

Conjugation	Unconjugated
Modification	Unmodified
Isotype	IgG
Clonality	Monoclonal Antibody
Form	Liquid
Storage	Store at 4°C short term. Aliquot and store at -20°C long term. Avoid freeze/thaw cycles.
Buffer	50mM Tris-Glycine(pH 7.4), 0.15M NaCl, 40% Glycerol, 0.01% Sodium azide and 0.05% BSA
Purification	Affinity Purified

Immunogen

Gene Name	PSMA2
Alternative Names	HC3; PMSA2; Proteasome component C3; PSC2; PSC3; psmA2
Gene ID	5683
SwissProt ID	P25787

Application

Dilution Ratio	WB: 1/500-1/1000 IHC: 1/50-1/100 IF: 1/50-1/200
Molecular Weight	Calculated MW: 26 kDa; Observed MW: 26 kDa

Product Name: Proteasome alpha 2 Rabbit Monoclonal Antibody
Catalog #: AMRe02479



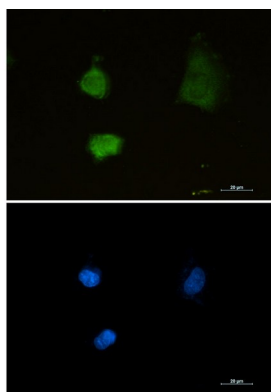
Background

The proteasome is a multicatalytic proteinase complex which is characterized by its ability to cleave peptides with Arg, Phe, Tyr, Leu, and Glu adjacent to the leaving group at neutral or slightly basic pH.

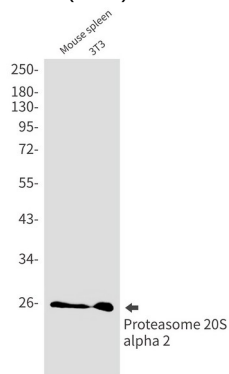
Research Area

Cell Biology

Image Data

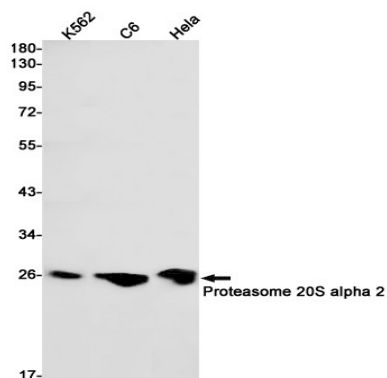


Immunocytochemistry analysis of Proteasome alpha 2 (green) in U87-MG using Proteasome alpha 2 antibody, and DAPI (blue).

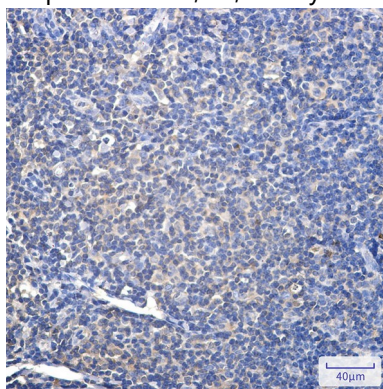


Western blot analysis of Proteasome 20S alpha 2 in mouse spleen, 3T3 lysates using Proteasome 20S alpha 2 antibody.

Product Name: Proteasome alpha 2 Rabbit Monoclonal Antibody
Catalog #: AMRe02479



Western blot analysis of Proteasome 20S alpha 2 in K562, C6, HeLa lysates using Proteasome 20S alpha 2 antibody



Immunohistochemistry analysis of paraffin-embedded Human tonsil using Proteasome 20S alpha 2 antibody. High-pressure and temperature Sodium Citrate pH 6.0 was used for antigen retrieval.

Note

For research use only.