

**Product Name: Phospho-PRC1 (Thr481) Rabbit  
Monoclonal Antibody  
Catalog #: AMRe02468**

---

## Summary

<b>Production Name</b>	Phospho-PRC1 (Thr481) Rabbit Monoclonal Antibody
<b>Description</b>	Recombinant Rabbit Monoclonal antibody
<b>Host</b>	Rabbit
<b>Application</b>	WB,IHC-F,IHC-P,ICC/IF
<b>Reactivity</b>	Human

## Performance

<b>Conjugation</b>	Unconjugated
<b>Modification</b>	Phosphorylated
<b>Isotype</b>	IgG
<b>Clonality</b>	Monoclonal Antibody
<b>Form</b>	Liquid
<b>Storage</b>	Store at 4°C short term. Aliquot and store at -20°C long term. Avoid freeze/thaw cycles.
<b>Buffer</b>	50mM Tris-Glycine(pH 7.4), 0.15M NaCl, 40% Glycerol, 0.01% Sodium azide and 0.05% BSA
<b>Purification</b>	Affinity Purified

## Immunogen

<b>Gene Name</b>	PRC1
<b>Alternative Names</b>	Protein regulator of cytokinesis 1
<b>Gene ID</b>	9055
<b>SwissProt ID</b>	O43663

## Application

<b>Dilution Ratio</b>	WB: 1/500-1/1000 IHC: 1/50-1/100 IF: 1/50-1/200
<b>Molecular Weight</b>	Calculated MW: 72 kDa; Observed MW: 72 kDa

**Product Name: Phospho-PRC1 (Thr481) Rabbit  
Monoclonal Antibody  
Catalog #: AMRe02468**



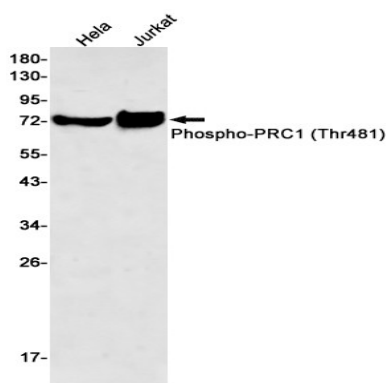
## Background

Cross-links antiparrallel microtubules at an average distance of 35 nM. Essential for controlling the spatiotemporal formation of the midzone and successful cytokinesis. Required for KIF14 localization to the central spindle and midbody.

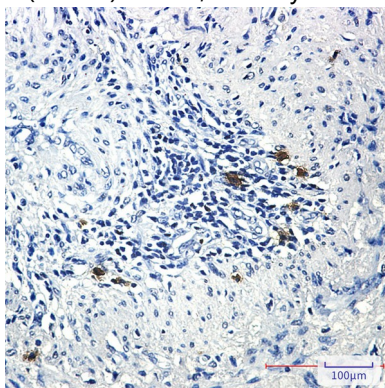
## Research Area

Cell Biology

## Image Data



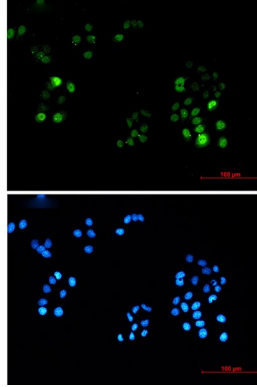
Western blot analysis of Phospho-PRC1 (Thr481) in HeLa, Jurkat lysates using Phospho-PRC1 (Thr481) antibody.



Immunohistochemistry analysis of paraffin-embedded Human lung cancer using PRC1 (Phospho-Thr481) antibody. High-pressure and temperature Sodium Citrate pH 6.0 was used for antigen retrieval.

**Product Name: Phospho-PRC1 (Thr481) Rabbit  
Monoclonal Antibody  
Catalog #: AMRe02468**

---



Immunocytochemistry analysis of Phospho-PRC1 (Thr481) (green) in HeLa using Phospho-PRC1 (Thr481) antibody, and DAPI(blue)

### **Note**

For research use only.