

Product Name: PPM1G Rabbit Monoclonal Antibody
Catalog #: AMRe02463



Summary

Production Name	PPM1G Rabbit Monoclonal Antibody
Description	Recombinant Rabbit Monoclonal antibody
Host	Rabbit
Application	WB
Reactivity	Human,Mouse,Rat

Performance

Conjugation	Unconjugated
Modification	Unmodified
Isotype	IgG
Clonality	Monoclonal Antibody
Form	Liquid
Storage	Store at 4°C short term. Aliquot and store at -20°C long term. Avoid freeze/thaw cycles.
Buffer	50mM Tris-Glycine(pH 7.4), 0.15M NaCl, 40% Glycerol, 0.01% Sodium azide and 0.05% BSA
Purification	Affinity Purified

Immunogen

Gene Name	PPM1G
Alternative Names	Protein phosphatase 1G; PP2C-gamma; Protein phosphatase magnesium-dependent 1 gamma
Gene ID	5496
SwissProt ID	O15355

Application

Dilution Ratio	WB: 1/500-1/1000
Molecular Weight	Calculated MW: 59 kDa; Observed MW: 75 kDa

Product Name: PPM1G Rabbit Monoclonal Antibody
Catalog #: AMRe02463



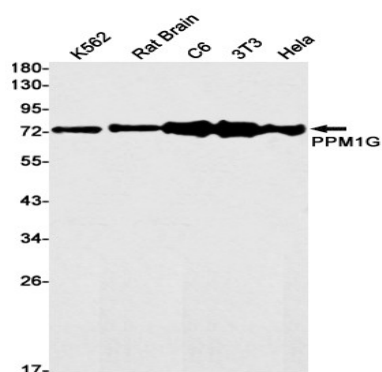
Background

The protein encoded by this gene is a member of the PP2C family of Ser/Thr protein phosphatases. PP2C family members are known to be negative regulators of cell stress response pathways. This phosphatase is found to be responsible for the dephosphorylation of Pre-mRNA splicing factors, which is important for the formation of functional spliceosome. Studies of a similar gene in mice suggested a role of this phosphatase in regulating cell cycle progression.

Research Area

Cell Biology

Image Data



Western blot analysis of PPM1G in K562, rat Brain, C6, 3T3, HeLa lysates using PPM1G antibody.

Note

For research use only.