

**Product Name: PDGFR alpha Rabbit Monoclonal Antibody**  
**Catalog #: AMRe02413**

---

## Summary

<b>Production Name</b>	PDGFR alpha Rabbit Monoclonal Antibody
<b>Description</b>	Recombinant Rabbit Monoclonal antibody
<b>Host</b>	Rabbit
<b>Application</b>	WB,IHC-F,IHC-P,ICC/IF,IP
<b>Reactivity</b>	Human,Mouse,Rat

## Performance

<b>Conjugation</b>	Unconjugated
<b>Modification</b>	Unmodified
<b>Isotype</b>	IgG
<b>Clonality</b>	Monoclonal Antibody
<b>Form</b>	Liquid
<b>Storage</b>	Store at 4°C short term. Aliquot and store at -20°C long term. Avoid freeze/thaw cycles.
<b>Buffer</b>	50mM Tris-Glycine(pH 7.4), 0.15M NaCl, 40% Glycerol, 0.01% Sodium azide and 0.05% BSA
<b>Purification</b>	Affinity Purified

## Immunogen

<b>Gene Name</b>	PDGFRA
<b>Alternative Names</b>	PDGFRA; PDGFR2; RHEPDGFRA; Platelet-derived growth factor receptor alpha; PDGF-R-alpha; PDGFR-alpha; Alpha platelet-derived growth factor receptor; Alpha-type platelet-derived growth factor receptor; CD140 antigen-like family member A; CD140a antigen; Platelet-derived growth factor alpha receptor; Platelet-derived growth factor receptor 2; PDGFR-2; CD140a
<b>Gene ID</b>	5156
<b>SwissProt ID</b>	P16234

## Application

**Product Name: PDGFR alpha Rabbit Monoclonal Antibody**  
**Catalog #: AMRe02413**

**Dilution Ratio**

WB: 1/500-1/1000 IHC: 1/50-1/100 IF: 1/50-1/200 IP: 1/20

**Molecular Weight**

Calculated MW: 123 kDa; Observed MW: 190 kDa

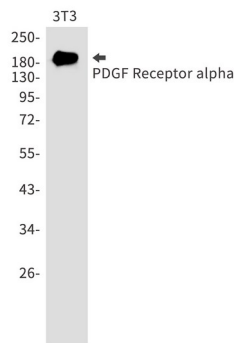
## Background

Platelet derived growth factor (PDGF) family proteins exist as several disulphide-bonded, dimeric isoforms (PDGF AA, PDGF AB, PDGF BB, PDGF CC, and PDGF DD) that bind in a specific pattern to two closely related receptor tyrosine kinases, PDGF receptor  $\alpha$  (PDGFR $\alpha$ ) and PDGF receptor  $\beta$  (PDGFR $\beta$ ). Receptor that binds both PDGFA and PDGFB and has a tyrosine-protein kinase activity.

## Research Area

Cardiovascular

## Image Data



Western blot analysis of PDGF Receptor alpha in 3T3 lysates using PDGFR alpha antibody.

## Note

For research use only.