

**Product Name: Phospho-Parvin alpha (Ser8) Rabbit
Monoclonal Antibody
Catalog #: AMRe02402**

Summary

| | |
|------------------------|--|
| Production Name | Phospho-Parvin alpha (Ser8) Rabbit Monoclonal Antibody |
| Description | Recombinant Rabbit Monoclonal antibody |
| Host | Rabbit |
| Application | WB,ICC/IF |
| Reactivity | Human,Mouse,Rat |

Performance

| | |
|---------------------|--|
| Conjugation | Unconjugated |
| Modification | Phosphorylated |
| Isotype | IgG |
| Clonality | Monoclonal Antibody |
| Form | Liquid |
| Storage | Store at 4°C short term. Aliquot and store at -20°C long term. Avoid freeze/thaw cycles. |
| Buffer | 50mM Tris-Glycine(pH 7.4), 0.15M NaCl, 40% Glycerol, 0.01% Sodium azide and 0.05% BSA |
| Purification | Affinity Purified |

Immunogen

| | |
|--------------------------|-----------------|
| Gene Name | PARVA |
| Alternative Names | MXRA2; CH-ILKBP |
| Gene ID | 55742 |
| SwissProt ID | Q9NVD7 |

Application

| | |
|-------------------------|--|
| Dilution Ratio | WB: 1/500-1/1000 IF: 1/50-1/200 |
| Molecular Weight | Calculated MW: 42 kDa; Observed MW: 42 kDa |

**Product Name: Phospho-Parvin alpha (Ser8) Rabbit
Monoclonal Antibody
Catalog #: AMRe02402**



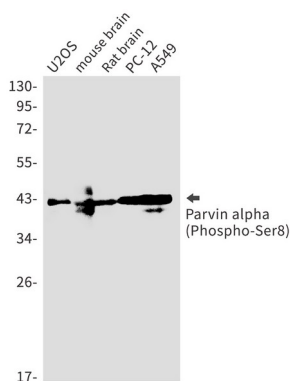
Background

Plays a role in sarcomere organization and in smooth muscle cell contraction. Required for normal development of the embryonic cardiovascular system, and for normal septation of the heart outflow tract. Plays a role in sprouting angiogenesis and is required for normal adhesion of vascular smooth muscle cells to endothelial cells during blood vessel development. Plays a role in the reorganization of the actin cytoskeleton, formation of lamellipodia and ciliogenesis. Plays a role in the establishment of cell polarity, cell adhesion, cell spreading, and directed cell migration.

Research Area

-

Image Data



Western blot analysis of Parvin alpha (Phospho-Ser8) in U2OS, mouse brain, rat brain, PC-12, A549 lysates using Phospho-Parvin alpha (Ser8) antibody.

Note

For research use only.