

Summary

Production Name	NXF1 Rabbit Monoclonal Antibody
Description	Recombinant Rabbit Monoclonal antibody
Host	Rabbit
Application	WB,IHC-F,IHC-P,ICC/IF,IP
Reactivity	Human

Performance

Conjugation	Unconjugated
Modification	Unmodified
Isotype	IgG
Clonality	Monoclonal Antibody
Form	Liquid
Storage	Store at 4°C short term. Aliquot and store at -20°C long term. Avoid freeze/thaw cycles.
Buffer	50mM Tris-Glycine(pH 7.4), 0.15M NaCl, 40% Glycerol, 0.01% Sodium azide and 0.05% BSA
Purification	Affinity Purified

Immunogen

Gene Name	NXF1
Alternative Names	DmNXF1; MEX67; Mex67p; Mvb1; NXF1; Sbr; TAP
Gene ID	10482
SwissProt ID	Q9UBU9

Application

Dilution Ratio	WB: 1/500-1/1000 IHC: 1/50-1/100 IF: 1/50-1/200 IP: 1/20
Molecular Weight	Calculated MW: 70 kDa; Observed MW: 70 kDa

Background

Product Name: NXF1 Rabbit Monoclonal Antibody
Catalog #: AMRe02370

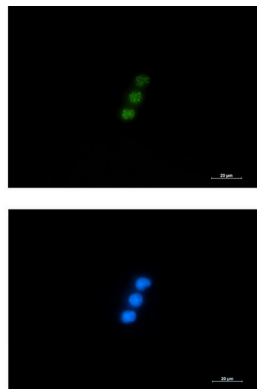


Involved in the nuclear export of mRNA species bearing retroviral constitutive transport elements (CTE) and in the export of mRNA from the nucleus to the cytoplasm. The NXF1-NXT1 heterodimer is involved in the export of HSP70 mRNA in conjunction with THOC4 and THOC5.

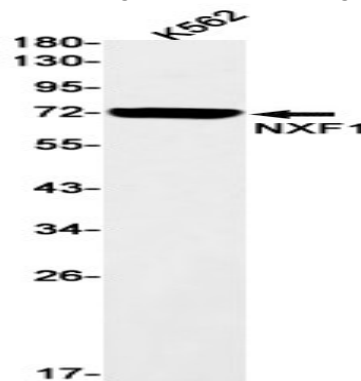
Research Area

Tags & Cell Markers

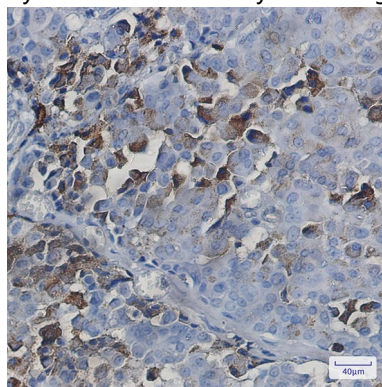
Image Data



Immunocytochemistry analysis of NXF1 (green) in Jurkat using NXF1 antibody, and DAPI (blue).



Western blot analysis of NXF1 in K562 lysates using NXF1 antibody.



Immunohistochemistry analysis of paraffin-embedded Human breast cancer tissue using NXF1 antibody. High-pressure and

Product Name: NXF1 Rabbit Monoclonal Antibody
Catalog #: AMRe02370



temperature Sodium Citrate pH 6.0 was used for antigen retrieval.

Note

For research use only.