

Product Name: Nuf2 Rabbit Monoclonal Antibody
Catalog #: AMRe02366



Summary

| | |
|------------------------|--|
| Production Name | Nuf2 Rabbit Monoclonal Antibody |
| Description | Recombinant Rabbit Monoclonal antibody |
| Host | Rabbit |
| Application | WB |
| Reactivity | Human |

Performance

| | |
|---------------------|--|
| Conjugation | Unconjugated |
| Modification | Unmodified |
| Isotype | IgG |
| Clonality | Monoclonal Antibody |
| Form | Liquid |
| Storage | Store at 4°C short term. Aliquot and store at -20°C long term. Avoid freeze/thaw cycles. |
| Buffer | 50mM Tris-Glycine(pH 7.4), 0.15M NaCl, 40% Glycerol, 0.01% Sodium azide and 0.05% BSA |
| Purification | Affinity Purified |

Immunogen

| | |
|--------------------------|--|
| Gene Name | NUF2 |
| Alternative Names | CDCA1; CT106; hNuf2; hNuf2R; hsNuf2; NUF2; NUF2R |
| Gene ID | 83540 |
| SwissProt ID | Q9BZD4 |

Application

| | |
|-------------------------|--|
| Dilution Ratio | WB: 1/500-1/1000 |
| Molecular Weight | Calculated MW: 54 kDa; Observed MW: 54 kDa |

Background

Product Name: Nuf2 Rabbit Monoclonal Antibody
Catalog #: AMRe02366

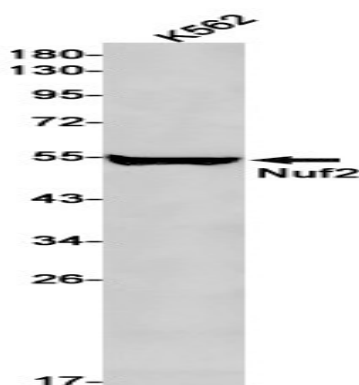


Acts as a component of the essential kinetochore-associated NDC80 complex, which is required for chromosome segregation and spindle checkpoint activity. Required for kinetochore integrity and the organization of stable microtubule binding sites in the outer plate of the kinetochore.

Research Area

Cell Biology

Image Data



Western blot analysis of Nuf2 in K562 lysates using Nuf2 antibody.

Note

For research use only.