

Product Name: Notch1 Rabbit Monoclonal Antibody
Catalog #: AMRe02351



Summary

Production Name	Notch1 Rabbit Monoclonal Antibody
Description	Recombinant Rabbit Monoclonal antibody
Host	Rabbit
Application	WB
Reactivity	Human,Rat

Performance

Conjugation	Unconjugated
Modification	Unmodified
Isotype	IgG
Clonality	Monoclonal Antibody
Form	Liquid
Storage	Store at 4°C short term. Aliquot and store at -20°C long term. Avoid freeze/thaw cycles.
Buffer	50mM Tris-Glycine(pH 7.4), 0.15M NaCl, 40% Glycerol, 0.01% Sodium azide and 0.05% BSA
Purification	Affinity Purified

Immunogen

Gene Name	NOTCH1
Alternative Names	NOTCH1; TAN1; Neurogenic locus notch homolog protein 1; Notch 1; hN1; Translocation-associated notch protein TAN-1
Gene ID	4851
SwissProt ID	P46531

Application

Dilution Ratio	WB: 1/500-1/1000
Molecular Weight	Calculated MW: 273 kDa; Observed MW: 120 kDa

Product Name: Notch1 Rabbit Monoclonal Antibody
Catalog #: AMRe02351



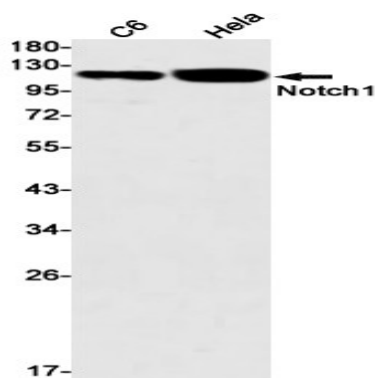
Background

Functions as a receptor for membrane-bound ligands Jagged1, Jagged2 and Delta1 to regulate cell-fate determination. Upon ligand activation through the released notch intracellular domain (NICD) it forms a transcriptional activator complex with RBPJ/RBPSUH and activates genes of the enhancer of split locus. Affects the implementation of differentiation, proliferation and apoptotic programs. Involved in angiogenesis; negatively regulates endothelial cell proliferation and migration and angiogenic sprouting.

Research Area

Neuroscience

Image Data



Western blot analysis of Notch1 in C6, HeLa lysates using Notch1 antibody.

Note

For research use only.