

**Product Name: Nesprin3 Rabbit Monoclonal Antibody**  
**Catalog #: AMRe02332**



## Summary

<b>Production Name</b>	Nesprin3 Rabbit Monoclonal Antibody
<b>Description</b>	Recombinant Rabbit Monoclonal antibody
<b>Host</b>	Rabbit
<b>Application</b>	WB
<b>Reactivity</b>	Human

## Performance

<b>Conjugation</b>	Unconjugated
<b>Modification</b>	Unmodified
<b>Isotype</b>	IgG
<b>Clonality</b>	Monoclonal Antibody
<b>Form</b>	Liquid
<b>Storage</b>	Store at 4°C short term. Aliquot and store at -20°C long term. Avoid freeze/thaw cycles.
<b>Buffer</b>	50mM Tris-Glycine(pH 7.4), 0.15M NaCl, 40% Glycerol, 0.01% Sodium azide and 0.05% BSA
<b>Purification</b>	Affinity Purified

## Immunogen

<b>Gene Name</b>	SYNE3
<b>Alternative Names</b>	KASH3; NET53; Nesp3; C14orf49; C14orf139; LINC00341; NCRNA00341
<b>Gene ID</b>	161176
<b>SwissProt ID</b>	Q6ZMZ3

## Application

<b>Dilution Ratio</b>	WB: 1/500-1/1000
<b>Molecular Weight</b>	Calculated MW: 112 kDa; Observed MW: 112 kDa

## Background

**Product Name: Nesprin3 Rabbit Monoclonal Antibody**  
**Catalog #: AMRe02332**

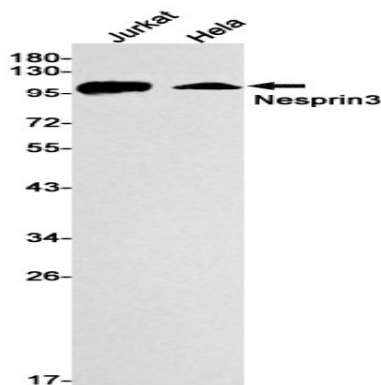


As a component of the LINC (Linker of Nucleoskeleton and Cytoskeleton) complex involved in the connection between the nuclear lamina and the cytoskeleton. The nucleocytoplasmic interactions established by the LINC complex play an important role in the transmission of mechanical forces across the nuclear envelope and in nuclear movement and positioning. Probable anchoring protein which tethers the nucleus to the cytoskeleton by binding PLEC which can associate with the intermediate filament system. Plays a role in the regulation of aortic epithelial cell morphology, and is required for flow-induced centrosome polarization and directional migration in aortic endothelial cells.

## Research Area

Signal Transduction

## Image Data



Western blot analysis of Nesprin3 in Jurkat, HeLa lysates using Nesprin3 antibody.

## Note

For research use only.