

Product Name: MTH1 Rabbit Monoclonal Antibody
Catalog #: AMRe02283



Summary

Production Name	MTH1 Rabbit Monoclonal Antibody
Description	Recombinant Rabbit Monoclonal antibody
Host	Rabbit
Application	WB,ICC/IF,IP
Reactivity	Human

Performance

Conjugation	Unconjugated
Modification	Unmodified
Isotype	IgG
Clonality	Monoclonal Antibody
Form	Liquid
Storage	Store at 4°C short term. Aliquot and store at -20°C long term. Avoid freeze/thaw cycles.
Buffer	50mM Tris-Glycine(pH 7.4), 0.15M NaCl, 40% Glycerol, 0.01% Sodium azide and 0.05% BSA
Purification	Affinity Purified

Immunogen

Gene Name	NUDT1
Alternative Names	MTH1; NUDT 1
Gene ID	4521
SwissProt ID	P36639

Application

Dilution Ratio	WB: 1/500-1/1000 IF: 1/50-1/200 IP: 1/20
Molecular Weight	Calculated MW: 18 kDa; Observed MW: 18 kDa

Background

Product Name: MTH1 Rabbit Monoclonal Antibody
Catalog #: AMRe02283

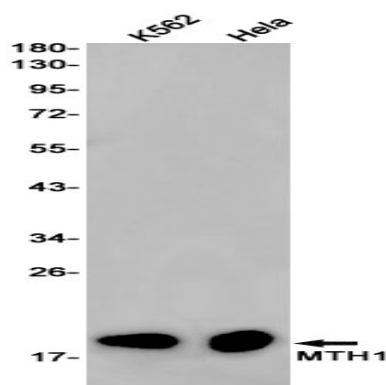


Antimutagenic. Acts as a sanitizing enzyme for oxidized nucleotide pools, thus suppressing cell dysfunction and death induced by oxidative stress. Hydrolyzes 8-oxo-dGTP, 8-oxo-dATP and 2-OH-dATP, thus preventing misincorporation of oxidized purine nucleoside triphosphates into DNA and subsequently preventing A:T to C:G and G:C to T:A transversions.

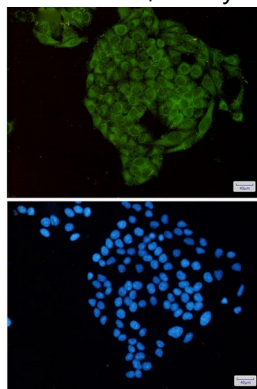
Research Area

Epigenetics and Nuclear Signaling

Image Data



Western blot analysis of MTH1 in K562, HeLa lysates using MTH1 antibody.



Immunocytochemistry analysis of MTH1(green) in HeLa using MTH1 antibody, and DAPI(blue)

Note

For research use only.