

## Summary

<b>Production Name</b>	MTCO2 Rabbit Monoclonal Antibody
<b>Description</b>	Recombinant Rabbit Monoclonal antibody
<b>Host</b>	Rabbit
<b>Application</b>	WB,IHC-P,IP
<b>Reactivity</b>	Human,Rat

## Performance

<b>Conjugation</b>	Unconjugated
<b>Modification</b>	Unmodified
<b>Isotype</b>	IgG
<b>Clonality</b>	Monoclonal Antibody
<b>Form</b>	Liquid
<b>Storage</b>	Store at 4°C short term. Aliquot and store at -20°C long term. Avoid freeze/thaw cycles.
<b>Buffer</b>	50mM Tris-Glycine(pH 7.4), 0.15M NaCl, 40% Glycerol, 0.01% Sodium azide and 0.05% BSA
<b>Purification</b>	Affinity Purified

## Immunogen

<b>Gene Name</b>	MT-CO2
<b>Alternative Names</b>	MT-CO2; COX2; CO2; Cytochrome c oxidase II; MTCO2; COII; COXII
<b>Gene ID</b>	4513
<b>SwissProt ID</b>	P00403

## Application

<b>Dilution Ratio</b>	WB: 1/500-1/1000 IHC: 1/50-1/100 IP: 1/20
<b>Molecular Weight</b>	Calculated MW: 26 kDa; Observed MW: 21 kDa

## Background

**Product Name: MTCO2 Rabbit Monoclonal Antibody**  
**Catalog #: AMRe02281**

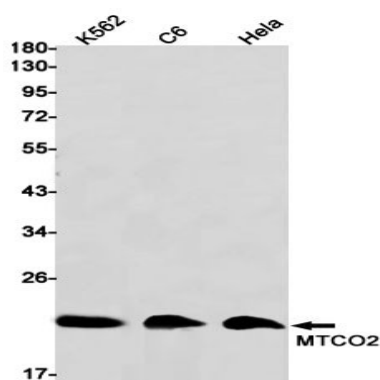


Cytochrome c oxidase is the component of the respiratory chain that catalyzes the reduction of oxygen to water. Subunits 1-3 form the functional core of the enzyme complex. Subunit 2 transfers the electrons from cytochrome c via its binuclear copper A center to the bimetallic center of the catalytic subunit 1.

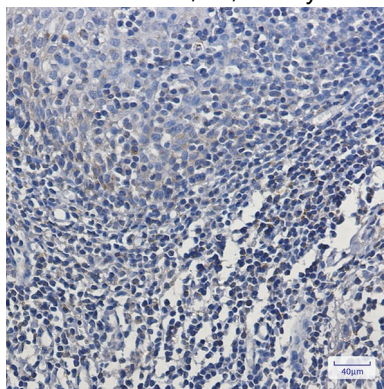
## Research Area

Signal Transduction

## Image Data



Western blot analysis of MTCO2 in K562, C6, HeLa lysates using MTCO2 antibody.



Immunohistochemistry analysis of paraffin-embedded Human tonsil using MTCO2 antibody. High-pressure and temperature Sodium Citrate pH 6.0 was used for antigen retrieval.

## Note

For research use only.