

Product Name: MRPS26 Rabbit Monoclonal Antibody
Catalog #: AMRe02272



Summary

Production Name	MRPS26 Rabbit Monoclonal Antibody
Description	Recombinant Rabbit Monoclonal antibody
Host	Rabbit
Application	WB,ICC/IF
Reactivity	Human

Performance

Conjugation	Unconjugated
Modification	Unmodified
Isotype	IgG
Clonality	Monoclonal Antibody
Form	Liquid
Storage	Store at 4°C short term. Aliquot and store at -20°C long term. Avoid freeze/thaw cycles.
Buffer	50mM Tris-Glycine(pH 7.4), 0.15M NaCl, 40% Glycerol, 0.01% Sodium azide and 0.05% BSA
Purification	Affinity Purified

Immunogen

Gene Name	MRPS26
Alternative Names	GI008; MRPS13; RPMS13; MRP-S13; MRP-S26; NY-BR-87; C20orf193; dJ534B8.3
Gene ID	64949
SwissProt ID	Q9BYN8

Application

Dilution Ratio	WB: 1/500-1/1000 IF: 1/50-1/200
Molecular Weight	Calculated MW: 24 kDa; Observed MW: 24 kDa

Background

Product Name: MRPS26 Rabbit Monoclonal Antibody
Catalog #: AMRe02272

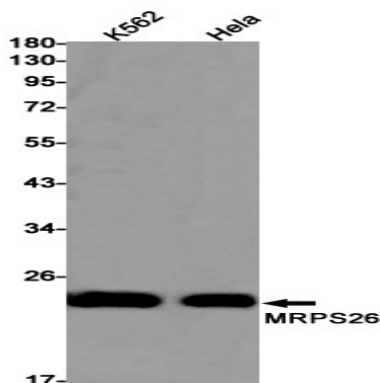


Mammalian mitochondrial ribosomal proteins are encoded by nuclear genes and help in protein synthesis within the mitochondrion. Mitochondrial ribosomes (mitoribosomes) consist of a small 28S subunit and a large 39S subunit.

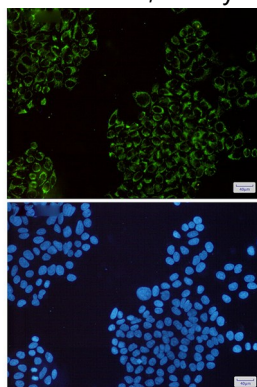
Research Area

Tags & Cell Markers

Image Data



Western blot analysis of MRPS26 in K562, HeLa lysates using MRPS26 antibody.



Immunocytochemistry analysis of MRPS26(green) in HeLa using MRPS26 antibody, and DAPI(blue)

Note

For research use only.