

**Product Name: Phospho-MEK1 (Ser298) Rabbit
Monoclonal Antibody
Catalog #: AMRe02243**

Summary

Production Name	Phospho-MEK1 (Ser298) Rabbit Monoclonal Antibody
Description	Recombinant Rabbit Monoclonal antibody
Host	Rabbit
Application	WB, ICC/IF
Reactivity	Human, Mouse, Rat

Performance

Conjugation	Unconjugated
Modification	Phosphorylated
Isotype	IgG
Clonality	Monoclonal Antibody
Form	Liquid
Storage	Store at 4°C short term. Aliquot and store at -20°C long term. Avoid freeze/thaw cycles.
Buffer	50mM Tris-Glycine (pH 7.4), 0.15M NaCl, 40% Glycerol, 0.01% Sodium azide and 0.05% BSA
Purification	Affinity Purified

Immunogen

Gene Name	MAP2K1
Alternative Names	MAP2K1; MEK1; PRKMK1; Dual specificity mitogen-activated protein kinase kinase 1; MAP kinase kinase 1; MAPKK 1; MKK1; ERK activator kinase 1; MAPK/ERK kinase 1; MEK 1
Gene ID	5604
SwissProt ID	Q02750

Application

Dilution Ratio	WB: 1/500-1/1000 IF: 1/50-1/200
Molecular Weight	Calculated MW: 43 kDa; Observed MW: 43 kDa

**Product Name: Phospho-MEK1 (Ser298) Rabbit
Monoclonal Antibody
Catalog #: AMRe02243**

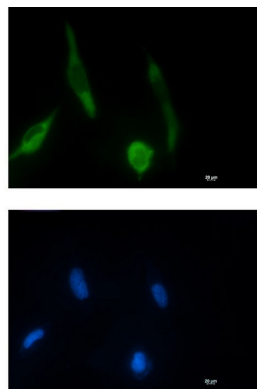
Background

The protein encoded by this gene is a member of the dual specificity protein kinase family, which acts as a mitogen-activated protein (MAP) kinase kinase. MAP kinases, also known as extracellular signal-regulated kinases (ERKs), act as an integration point for multiple biochemical signals.

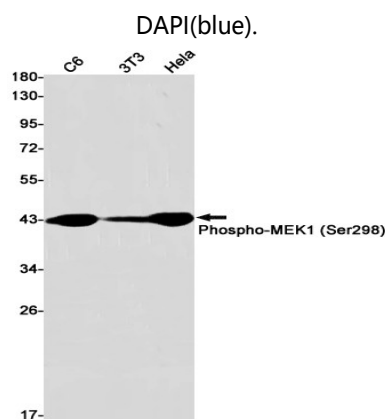
Research Area

Signal Transduction

Image Data



Immunocytochemistry analysis of Phospho-MEK1 (Ser298) (green) in HT-1080 using Phospho-MEK1 (Ser298) antibody, and DAPI (blue).



Western blot analysis of Phospho-MEK1 (Ser298) in C6, 3T3, HeLa lysates using Phospho-MEK1 (Ser298) antibody.

Note

For research use only.