

Product Name: Mannose Receptor Rabbit Monoclonal Antibody
Catalog #: AMRe02227



Summary

Production Name	Mannose Receptor Rabbit Monoclonal Antibody
Description	Recombinant Rabbit Monoclonal antibody
Host	Rabbit
Application	WB
Reactivity	Human,Rat

Performance

Conjugation	Unconjugated
Modification	Unmodified
Isotype	IgG
Clonality	Monoclonal Antibody
Form	Liquid
Storage	Store at 4°C short term. Aliquot and store at -20°C long term. Avoid freeze/thaw cycles.
Buffer	50mM Tris-Glycine(pH 7.4), 0.15M NaCl, 40% Glycerol, 0.01% Sodium azide and 0.05% BSA
Purification	Affinity Purified

Immunogen

Gene Name	MRC1
Alternative Names	MRC1; CLEC13D; CLEC13DL; MRC1L1; Macrophage mannose receptor 1; MMR; C-type lectin domain family 13 member D; C-type lectin domain family 13 member D-like; Macrophage mannose receptor 1-like protein 1; CD antigen CD206
Gene ID	4360
SwissProt ID	P22897

Application

Dilution Ratio	WB: 1/500-1/1000
Molecular Weight	Calculated MW: 166 kDa; Observed MW: 166 kDa

Product Name: Mannose Receptor Rabbit Monoclonal Antibody
Catalog #: AMRe02227



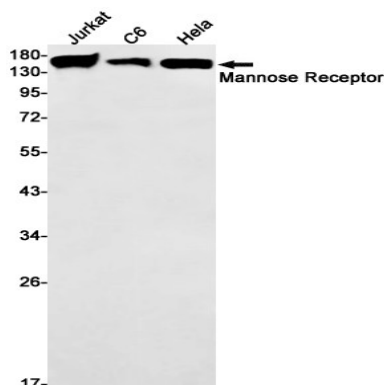
Background

Mediates the endocytosis of glycoproteins by macrophages. Binds both sulfated and non-sulfated polysaccharide chains. (Microbial infection) Acts as phagocytic receptor for bacteria, fungi and other pathogens. Acts as a receptor for Dengue virus envelope protein E (PubMed:18266465). Interacts with hepatitis B virus envelope protein (PubMed:19683778).

Research Area

Immunology

Image Data



Western blot analysis of Mannose Receptor in Jurkat, C6, HeLa lysates using Mannose Receptor antibody.

Note

For research use only.