

Product Name: Proteasome beta 8 Rabbit Monoclonal Antibody
Catalog #: AMRe02217



Summary

Production Name	Proteasome beta 8 Rabbit Monoclonal Antibody
Description	Recombinant Rabbit Monoclonal antibody
Host	Rabbit
Application	WB,ICC/IF,IP
Reactivity	Human,Mouse

Performance

Conjugation	Unconjugated
Modification	Unmodified
Isotype	IgG
Clonality	Monoclonal Antibody
Form	Liquid
Storage	Store at 4°C short term. Aliquot and store at -20°C long term. Avoid freeze/thaw cycles.
Buffer	50mM Tris-Glycine(pH 7.4), 0.15M NaCl, 40% Glycerol, 0.01% Sodium azide and 0.05% BSA
Purification	Affinity Purified

Immunogen

Gene Name	PSMB8
Alternative Names	PSMB8; LMP7; PSMB5i; RING10; Y2; Proteasome subunit beta type-8; Low molecular mass protein 7; Macropain subunit C13; Multicatalytic endopeptidase complex subunit C13; Proteasome component C13; Proteasome subunit beta-5i; Really interesting
Gene ID	5696
SwissProt ID	P28062

Application

Dilution Ratio	WB: 1/500-1/1000 IF: 1/50-1/200 IP: 1/20
Molecular Weight	Calculated MW: 30 kDa; Observed MW: 23 kDa

Product Name: Proteasome beta 8 Rabbit Monoclonal Antibody
Catalog #: AMRe02217



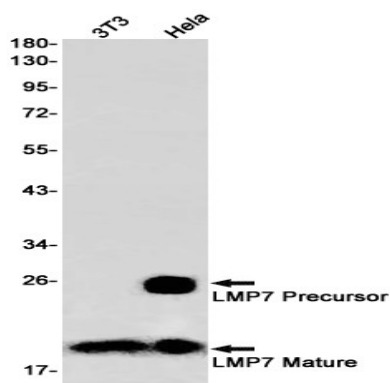
Background

The proteasome is a multicatalytic proteinase complex which is characterized by its ability to cleave peptides with Arg, Phe, Tyr, Leu, and Glu adjacent to the leaving group at neutral or slightly basic pH. The proteasome has an ATP-dependent proteolytic activity.

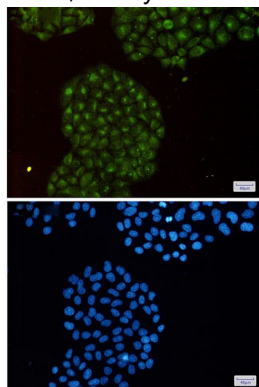
Research Area

Cell Biology

Image Data



Western blot analysis of LMP7 in 3T3, HeLa lysates using Proteasome beta 8 antibody.



Immunocytochemistry analysis of LMP7(green) in HeLa using LMP7 antibody, and DAPI(blue)

Note

For research use only.