

Product Name: Laminin gamma 1 Rabbit Monoclonal Antibody
Catalog #: AMRe02204

Summary

Production Name	Laminin gamma 1 Rabbit Monoclonal Antibody
Description	Recombinant Rabbit Monoclonal antibody
Host	Rabbit
Application	WB,IHC-P,IP
Reactivity	Human,Mouse,Rat

Performance

Conjugation	Unconjugated
Modification	Unmodified
Isotype	IgG
Clonality	Monoclonal Antibody
Form	Liquid
Storage	Store at 4°C short term. Aliquot and store at -20°C long term. Avoid freeze/thaw cycles.
Buffer	50mM Tris-Glycine(pH 7.4), 0.15M NaCl, 40% Glycerol, 0.01% Sodium azide and 0.05% BSA
Purification	Affinity Purified

Immunogen

Gene Name	LAMC1
Alternative Names	LAMC1; LAMB2; Laminin subunit gamma-1; Laminin B2 chain; Laminin-1 subunit gamma; Laminin-10 subunit gamma; Laminin-11 subunit gamma; Laminin-2 subunit gamma; Laminin-3 subunit gamma; Laminin-4 subunit gamma; Laminin-6 subunit gamma; Lamini
Gene ID	3915
SwissProt ID	P11047

Application

Dilution Ratio	WB: 1/500-1/1000 IHC: 1/50-1/100 IP: 1/20
-----------------------	---

Product Name: Laminin gamma 1 Rabbit Monoclonal Antibody
Catalog #: AMRe02204



Molecular Weight

Calculated MW: 178 kDa; Observed MW: 220-250 kDa

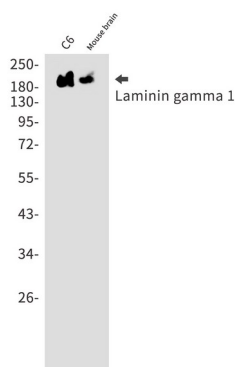
Background

Binding to cells via a high affinity receptor, laminin is thought to mediate the attachment, migration and organization of cells into tissues during embryonic development by interacting with other extracellular matrix components.

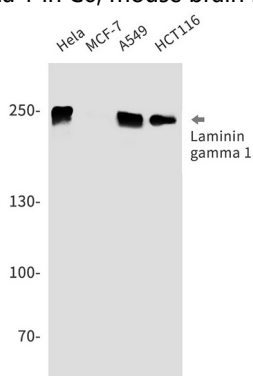
Research Area

Cell Biology

Image Data



Western blot analysis of Laminin gamma 1 in C6, mouse brain lysates using Laminin gamma 1 antibody.



Western blot analysis of Laminin gamma 1 in HeLa, MCF-7, A549, HCT116 lysates using Laminin gamma 1 antibody.

Note

For research use only.