

**Product Name: Lactate Dehydrogenase C Rabbit
Monoclonal Antibody
Catalog #: AMRe02199**

Summary

Production Name	Lactate Dehydrogenase C Rabbit Monoclonal Antibody
Description	Recombinant Rabbit Monoclonal antibody
Host	Rabbit
Application	WB
Reactivity	Human

Performance

Conjugation	Unconjugated
Modification	Unmodified
Isotype	IgG
Clonality	Monoclonal Antibody
Form	Liquid
Storage	Store at 4°C short term. Aliquot and store at -20°C long term. Avoid freeze/thaw cycles.
Buffer	50mM Tris-Glycine(pH 7.4), 0.15M NaCl, 40% Glycerol, 0.01% Sodium azide and 0.05% BSA
Purification	Affinity Purified

Immunogen

Gene Name	LDHC
Alternative Names	CT32; LDH3; LDHX
Gene ID	3948
SwissProt ID	P07864

Application

Dilution Ratio	WB: 1/500-1/1000
Molecular Weight	Calculated MW: 36 kDa; Observed MW: 36 kDa

**Product Name: Lactate Dehydrogenase C Rabbit
Monoclonal Antibody
Catalog #: AMRe02199**



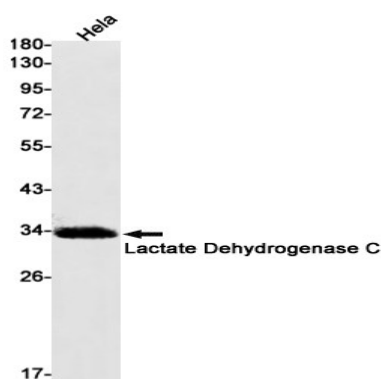
Background

Possible role in sperm motility.

Research Area

Signal Transduction

Image Data



Western blot analysis of Lactate Dehydrogenase C in HeLa lysates using Lactate Dehydrogenase C antibody.

Note

For research use only.