

**Product Name: L1CAM Rabbit Monoclonal Antibody**  
**Catalog #: AMRe02198**



## Summary

<b>Production Name</b>	L1CAM Rabbit Monoclonal Antibody
<b>Description</b>	Recombinant Rabbit Monoclonal antibody
<b>Host</b>	Rabbit
<b>Application</b>	WB,IHC-P
<b>Reactivity</b>	Human

## Performance

<b>Conjugation</b>	Unconjugated
<b>Modification</b>	Unmodified
<b>Isotype</b>	IgG
<b>Clonality</b>	Monoclonal Antibody
<b>Form</b>	Liquid
<b>Storage</b>	Store at 4°C short term. Aliquot and store at -20°C long term. Avoid freeze/thaw cycles.
<b>Buffer</b>	50mM Tris-Glycine(pH 7.4), 0.15M NaCl, 40% Glycerol, 0.01% Sodium azide and 0.05% BSA
<b>Purification</b>	Affinity Purified

## Immunogen

<b>Gene Name</b>	L1CAM
<b>Alternative Names</b>	L1CAM; CAML1; MIC5; Neural cell adhesion molecule L1; N-CAM-L1; NCAM-L1; CD antigen CD171
<b>Gene ID</b>	3897
<b>SwissProt ID</b>	P32004

## Application

<b>Dilution Ratio</b>	WB: 1/500-1/1000 IHC: 1/50-1/100
<b>Molecular Weight</b>	Calculated MW: 140 kDa; Observed MW: 140 kDa

**Product Name: L1CAM Rabbit Monoclonal Antibody**  
**Catalog #: AMRe02198**



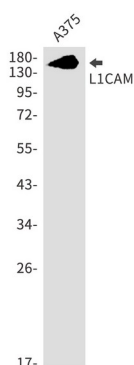
## Background

Cell adhesion molecule with an important role in the development of the nervous system. Involved in neuron-neuron adhesion, neurite fasciculation, outgrowth of neurites, etc. Binds to axonin on neurons.

## Research Area

Signal Transduction

## Image Data



Western blot analysis of L1CAM in A375 lysates using L1CAM antibody.

## Note

For research use only.