

Product Name: KCTD3 Rabbit Monoclonal Antibody
Catalog #: AMRe02188



Summary

Production Name	KCTD3 Rabbit Monoclonal Antibody
Description	Recombinant Rabbit Monoclonal antibody
Host	Rabbit
Application	WB
Reactivity	Human

Performance

Conjugation	Unconjugated
Modification	Unmodified
Isotype	IgG
Clonality	Monoclonal Antibody
Form	Liquid
Storage	Store at 4°C short term. Aliquot and store at -20°C long term. Avoid freeze/thaw cycles.
Buffer	50mM Tris-Glycine(pH 7.4), 0.15M NaCl, 40% Glycerol, 0.01% Sodium azide and 0.05% BSA
Purification	Affinity Purified

Immunogen

Gene Name	KCTD3
Alternative Names	Renal carcinoma antigen NY-REN-45
Gene ID	51133
SwissProt ID	Q9Y597

Application

Dilution Ratio	WB: 1/500-1/1000
Molecular Weight	Calculated MW: 89 kDa; Observed MW: 89 kDa

Background

Product Name: KCTD3 Rabbit Monoclonal Antibody
Catalog #: AMRe02188

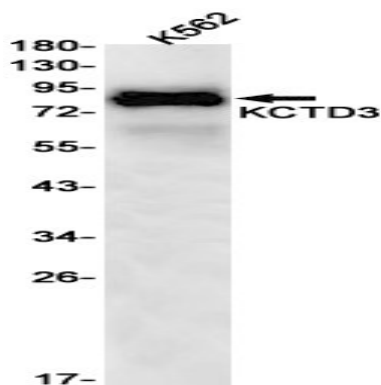


Accessory subunit of potassium/sodium hyperpolarization-activated cyclic nucleotide-gated channel 3 (HCN3) up-regulating its cell-surface expression and current density without affecting its voltage dependence and kinetics.

Research Area

Neuroscience

Image Data



Western blot analysis of KCTD3 in K562 lysates using KCTD3 antibody.

Note

For research use only.