

## Summary

<b>Production Name</b>	IRF1 Rabbit Monoclonal Antibody
<b>Description</b>	Recombinant Rabbit Monoclonal antibody
<b>Host</b>	Rabbit
<b>Application</b>	WB,IHC-F,IHC-P,ICC/IF,IP
<b>Reactivity</b>	Human,Mouse,Rat

## Performance

<b>Conjugation</b>	Unconjugated
<b>Modification</b>	Unmodified
<b>Isotype</b>	IgG
<b>Clonality</b>	Monoclonal Antibody
<b>Form</b>	Liquid
<b>Storage</b>	Store at 4°C short term. Aliquot and store at -20°C long term. Avoid freeze/thaw cycles.
<b>Buffer</b>	50mM Tris-Glycine(pH 7.4), 0.15M NaCl, 40% Glycerol, 0.01% Sodium azide and 0.05% BSA
<b>Purification</b>	Affinity Purified

## Immunogen

<b>Gene Name</b>	IRF1
<b>Alternative Names</b>	IRF1; Interferon regulatory factor 1; IRF-1
<b>Gene ID</b>	3659
<b>SwissProt ID</b>	P10914

## Application

<b>Dilution Ratio</b>	WB: 1/500-1/1000 IHC: 1/50-1/100 IF: 1/50-1/200 IP: 1/20
<b>Molecular Weight</b>	Calculated MW: 37 kDa; Observed MW: 48 kDa

## Background

**Product Name: IRF1 Rabbit Monoclonal Antibody**  
**Catalog #: AMRe02171**

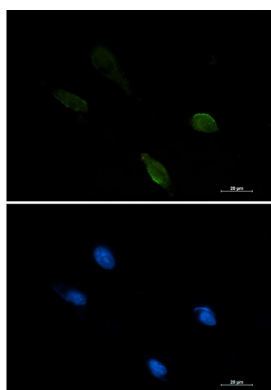


Specifically binds to the upstream regulatory region of type I IFN and IFN-inducible MHC class I genes (the interferon consensus sequence (ICS)) and activates those genes. Acts as a tumor suppressor. Defects in IRF1 are a cause of gastric cancer (GASC) [MIM:613659]; also called gastric cancer intestinal or stomach cancer. Gastric cancer is a malignant disease which starts in the stomach, can spread to the esophagus or the small intestine, and can extend through the stomach wall to nearby lymph nodes and organs. It also can metastasize to other parts of the body.

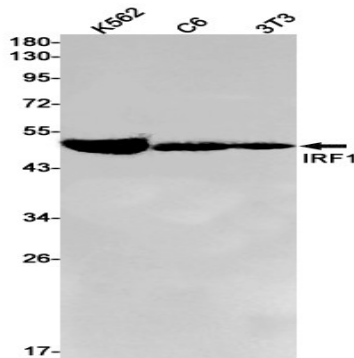
## Research Area

Epigenetics and Nuclear Signaling

## Image Data



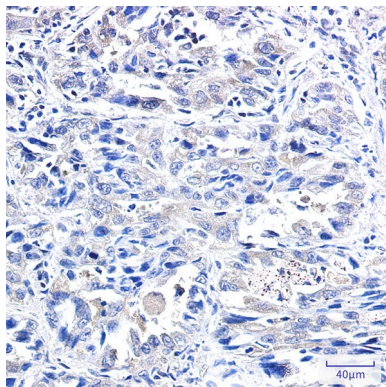
Immunocytochemistry analysis of IRF1 (green) in U87-MG using IRF1 antibody, and DAPI (blue).



Western blot analysis of IRF1 in K562, C6, 3T3 lysates using IRF1 antibody.

**Product Name: IRF1 Rabbit Monoclonal Antibody**  
**Catalog #: AMRe02171**

---



Immunohistochemistry analysis of paraffin-embedded Human lung cancer tissue using IRF1 antibody. High-pressure and temperature Sodium Citrate pH 6.0 was used for antigen retrieval.

**Note**

For research use only.