

Summary

Production Name	HtrA2 Rabbit Monoclonal Antibody
Description	Recombinant Rabbit Monoclonal antibody
Host	Rabbit
Application	WB,IHC-F,IHC-P,ICC/IF,IP
Reactivity	Human,Mouse

Performance

Conjugation	Unconjugated
Modification	Unmodified
Isotype	IgG
Clonality	Monoclonal Antibody
Form	Liquid
Storage	Store at 4°C short term. Aliquot and store at -20°C long term. Avoid freeze/thaw cycles.
Buffer	50mM Tris-Glycine(pH 7.4), 0.15M NaCl, 40% Glycerol, 0.01% Sodium azide and 0.05% BSA
Purification	Affinity Purified

Immunogen

Gene Name	HTRA2 High temperature requirement protein A2; HTRA 2; HtrA like serine protease; HtrA serine peptidase 2; HtrA; E. coli; homolog of; 2; HtrA2; HTRA2_HUMAN; mitochondrial; Omi stress regulated endoprotease; Omi stress-regulated endoprotease; PARK 13; PARK13; Protease serine 25; PRSS 25; PRSS25; Serine protease 25; Serine protease HTRA2; Serine protease HTRA2 mitochondrial; Serine protease htra2 mitochondrial precursor; Serine protease omi; Serine proteinase OMI.
Alternative Names	
Gene ID	27429
SwissProt ID	O43464

Application

Product Name: HtrA2 Rabbit Monoclonal Antibody
Catalog #: AMRe02129



Dilution Ratio

WB: 1/500-1/1000 IHC: 1/50-1/100 IF: 1/50-1/200 IP: 1/20

Molecular Weight

Calculated MW: 49 kDa; Observed MW: 36 kDa

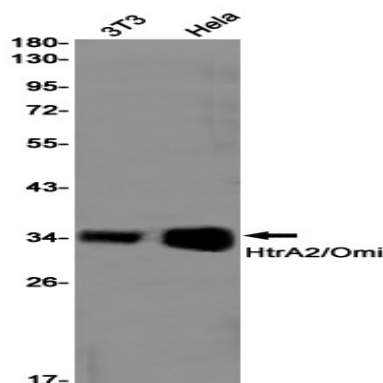
Background

High temperature requirement protein A2 (HtrA2)/Omi is a serine protease with homology to the E. coli HtrA protein (DegP) and is thought to be involved in apoptosis and stress-induced degradation of misfolded proteins. While HtrA2 was originally identified to be present in either the nucleus or endoplasmic reticulum, subsequent studies have shown that it localizes in mitochondria and is released during apoptosis.

Research Area

Neuroscience

Image Data



Western blot analysis of HtrA2/Omi in 3T3, HeLa lysates using HtrA2 antibody.

Note

For research use only.