

**Product Name: Galectin 3 Rabbit Monoclonal Antibody**  
**Catalog #: AMRe02020**



## Summary

<b>Production Name</b>	Galectin 3 Rabbit Monoclonal Antibody
<b>Description</b>	Recombinant Rabbit Monoclonal antibody
<b>Host</b>	Rabbit
<b>Application</b>	WB,IHC-F,IHC-P,ICC/IF,IP
<b>Reactivity</b>	Human

## Performance

<b>Conjugation</b>	Unconjugated
<b>Modification</b>	Unmodified
<b>Isotype</b>	IgG
<b>Clonality</b>	Monoclonal Antibody
<b>Form</b>	Liquid
<b>Storage</b>	Store at 4°C short term. Aliquot and store at -20°C long term. Avoid freeze/thaw cycles.
<b>Buffer</b>	50mM Tris-Glycine(pH 7.4), 0.15M NaCl, 40% Glycerol, 0.01% Sodium azide and 0.05% BSA
<b>Purification</b>	Affinity Purified

## Immunogen

<b>Gene Name</b>	LGALS3
<b>Alternative Names</b>	LGALS3
<b>Gene ID</b>	3958
<b>SwissProt ID</b>	P17931

## Application

<b>Dilution Ratio</b>	WB: 1/500-1/1000 IHC: 1/50-1/100 IF: 1/50-1/200 IP: 1/20
<b>Molecular Weight</b>	Calculated MW: 26 kDa; Observed MW: 26 kDa

## Background

**Product Name: Galectin 3 Rabbit Monoclonal Antibody**  
**Catalog #: AMRe02020**

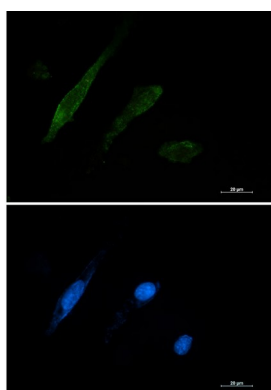


Galactose-specific lectin which binds IgE. May mediate with the alpha-3, beta-1 integrin the stimulation by CSPG4 of endothelial cells migration. Together with DMBT1, required for terminal differentiation of columnar epithelial cells during early embryogenesis.

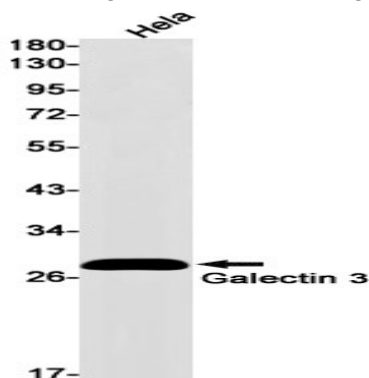
## Research Area

Neuroscience

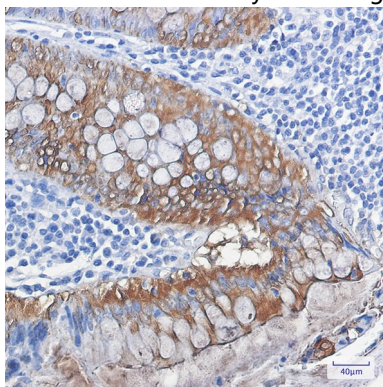
## Image Data



Immunocytochemistry analysis of Galectin 3 (green) in U87-MG using Galectin 3 antibody, and DAPI (blue).



Western blot analysis of Galectin 3 in HeLa lysates using Galectin 3 antibody.



Immunohistochemistry analysis of paraffin-embedded Human colon cancer tissue using Galectin 3 antibody. High-pressure

**Product Name: Galectin 3 Rabbit Monoclonal Antibody**  
**Catalog #: AMRe02020**



---

and temperature Sodium Citrate pH 6.0 was used for antigen retrieval.

**Note**

For research use only.