

Product Name: Galectin 1 Rabbit Monoclonal Antibody
Catalog #: AMRe02017



Summary

Production Name	Galectin 1 Rabbit Monoclonal Antibody
Description	Recombinant Rabbit Monoclonal antibody
Host	Rabbit
Application	WB,IHC-P,IP
Reactivity	Human,Rat

Performance

Conjugation	Unconjugated
Modification	Unmodified
Isotype	IgG
Clonality	Monoclonal Antibody
Form	Liquid
Storage	Store at 4°C short term. Aliquot and store at -20°C long term. Avoid freeze/thaw cycles.
Buffer	50mM Tris-Glycine(pH 7.4), 0.15M NaCl, 40% Glycerol, 0.01% Sodium azide and 0.05% BSA
Purification	Affinity Purified

Immunogen

Gene Name	LGALS1
Alternative Names	LGALS1; Galectin-1; Gal-1; 14 kDa laminin-binding protein; HLBP14; 14 kDa lectin; Beta-galactoside-binding lectin L-14-I; Galaptin; HBL; HPL; Lactose-binding lectin 1; Lectin galactoside-binding soluble 1; Putative MAPK-activating protein P
Gene ID	3956
SwissProt ID	P09382

Application

Dilution Ratio	WB: 1/500-1/1000 IHC: 1/50-1/100 IP: 1/20
Molecular Weight	Calculated MW: 15 kDa; Observed MW: 15 kDa

Product Name: Galectin 1 Rabbit Monoclonal Antibody
Catalog #: AMRe02017



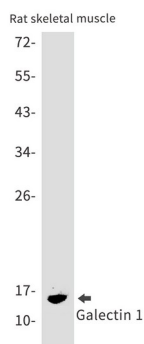
Background

May regulate apoptosis, cell proliferation and cell differentiation. Binds beta-galactoside and a wide array of complex carbohydrates. Inhibits CD45 protein phosphatase activity and therefore the dephosphorylation of Lyn kinase.

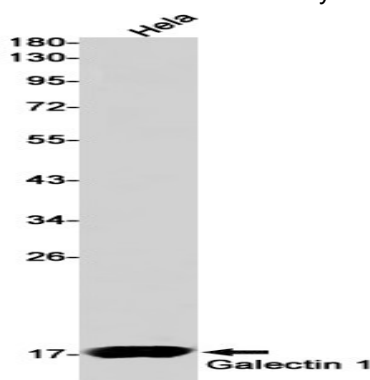
Research Area

Cell Biology

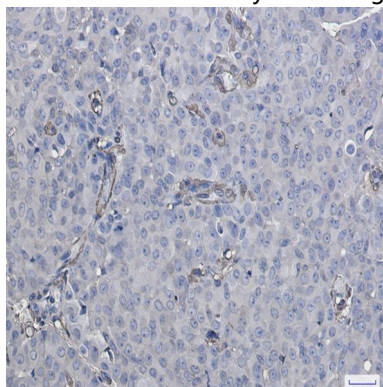
Image Data



Western blot analysis of Galectin 1 in rat skeletal muscle lysates using Galectin 1 antibody.



Western blot analysis of Galectin 1 in HeLa lysates using Galectin 1 antibody.



Product Name: Galectin 1 Rabbit Monoclonal Antibody
Catalog #: AMRe02017



Immunohistochemistry analysis of paraffin-embedded Human breast cancer using Galectin 1 antibody. High-pressure and temperature Sodium Citrate pH 6.0 was used for antigen retrieval.

Note

For research use only.