

Product Name: EWSR1 Rabbit Monoclonal Antibody
Catalog #: AMRe01963



Summary

| | |
|------------------------|--|
| Production Name | EWSR1 Rabbit Monoclonal Antibody |
| Description | Recombinant Rabbit Monoclonal antibody |
| Host | Rabbit |
| Application | WB,ICC/IF |
| Reactivity | Human,Mouse,Rat |

Performance

| | |
|---------------------|--|
| Conjugation | Unconjugated |
| Modification | Unmodified |
| Isotype | IgG |
| Clonality | Monoclonal Antibody |
| Form | Liquid |
| Storage | Store at 4°C short term. Aliquot and store at -20°C long term. Avoid freeze/thaw cycles. |
| Buffer | 50mM Tris-Glycine(pH 7.4), 0.15M NaCl, 40% Glycerol, 0.01% Sodium azide and 0.05% BSA |
| Purification | Affinity Purified |

Immunogen

| | |
|--------------------------|--|
| Gene Name | EWSR1 |
| Alternative Names | EWSR1; EWS; RNA-binding protein EWS; EWS oncogene; Ewing sarcoma breakpoint region 1 protein |
| Gene ID | 2130 |
| SwissProt ID | Q01844 |

Application

| | |
|-------------------------|--|
| Dilution Ratio | WB: 1/500-1/1000 IF: 1/50-1/200 |
| Molecular Weight | Calculated MW: 68 kDa; Observed MW: 85 kDa |

Product Name: EWSR1 Rabbit Monoclonal Antibody
Catalog #: AMRe01963



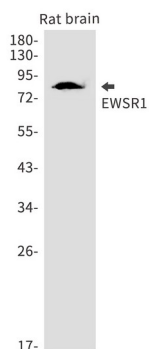
Background

Might normally function as a repressor. EWS-fusion-proteins (EFPS) may play a role in the tumorigenic process. They may disturb gene expression by mimicking, or interfering with the normal function of CTD-POLII within the transcription initiation complex.

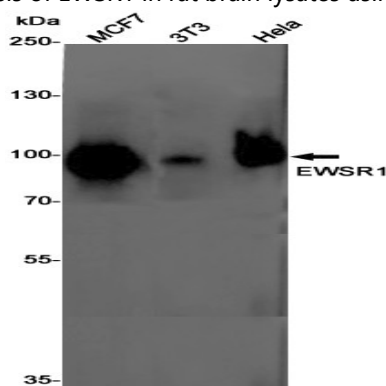
Research Area

Tags & Cell Markers

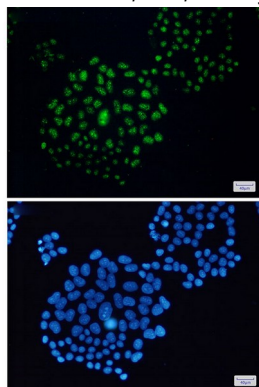
Image Data



Western blot analysis of EWSR1 in rat brain lysates using EWSR1 antibody.



Western blot analysis of EWSR1 in MCF-7, 3T3, HeLa lysates using EWSR1 antibody.



Product Name: EWSR1 Rabbit Monoclonal Antibody
Catalog #: AMRe01963



Immunocytochemistry analysis of EWSR1(green) in Hela using EWSR1 antibody,and DAPI(blue)

Note

For research use only.