

**Product Name: EWSR1 Rabbit Monoclonal Antibody**  
**Catalog #: AMRe01962**



## Summary

|                        |  |
|------------------------|--|
| <b>Production Name</b> | EWSR1 Rabbit Monoclonal Antibody       |
| <b>Description</b>     | Recombinant Rabbit Monoclonal antibody |
| <b>Host</b>            | Rabbit                                 |
| <b>Application</b>     | WB,ICC/IF                              |
| <b>Reactivity</b>      | Human                                  |

## Performance

|                     |  |
|---------------------|--|
| <b>Conjugation</b>  | Unconjugated   |
| <b>Modification</b> | Unmodified   |
| <b>Isotype</b>      | IgG  |
| <b>Clonality</b>    | Monoclonal Antibody  |
| <b>Form</b>         | Liquid   |
| <b>Storage</b>      | Store at 4°C short term. Aliquot and store at -20°C long term. Avoid freeze/thaw cycles. |
| <b>Buffer</b>       | 50mM Tris-Glycine(pH 7.4), 0.15M NaCl, 40% Glycerol, 0.01% Sodium azide and 0.05% BSA    |
| <b>Purification</b> | Affinity Purified  |

## Immunogen

|                          |  |
|--------------------------|--|
| <b>Gene Name</b>         | EWSR1  |
| <b>Alternative Names</b> | EWSR1; EWS; RNA-binding protein EWS; EWS oncogene; Ewing sarcoma breakpoint region 1 protein |
| <b>Gene ID</b>           | 2130   |
| <b>SwissProt ID</b>      | Q01844   |

## Application

|                         |  |
|-------------------------|--|
| <b>Dilution Ratio</b>   | WB: 1/500-1/1000 IF: 1/50-1/200            |
| <b>Molecular Weight</b> | Calculated MW: 68 kDa; Observed MW: 85 kDa |

**Product Name: EWSR1 Rabbit Monoclonal Antibody**  
**Catalog #: AMRe01962**



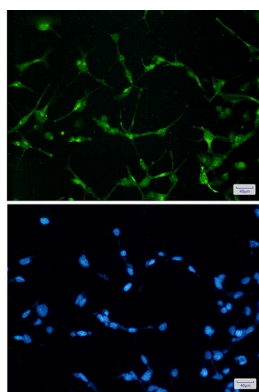
## Background

Might normally function as a repressor. EWS-fusion-proteins (EFPS) may play a role in the tumorigenic process. They may disturb gene expression by mimicking, or interfering with the normal function of CTD-POLII within the transcription initiation complex.

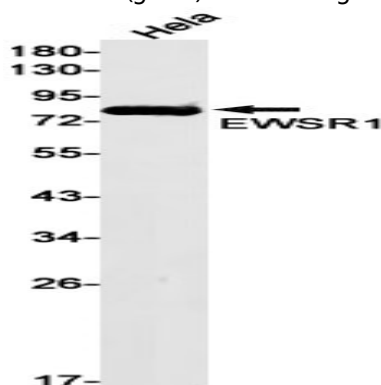
## Research Area

Tags & Cell Markers

## Image Data



Immunocytochemistry analysis of EWSR1 (green) in 293t using EWSR1 antibody, and DAPI(blue).



Western blot analysis of EWSR1 in HeLa lysates using EWSR1 antibody.

## Note

For research use only.