

**Product Name: ENO3 Rabbit Monoclonal Antibody**  
**Catalog #: AMRe01948**



## Summary

<b>Production Name</b>	ENO3 Rabbit Monoclonal Antibody
<b>Description</b>	Recombinant Rabbit Monoclonal antibody
<b>Host</b>	Rabbit
<b>Application</b>	WB,ICC/IF
<b>Reactivity</b>	Human,Mouse,Rat

## Performance

<b>Conjugation</b>	Unconjugated
<b>Modification</b>	Unmodified
<b>Isotype</b>	IgG
<b>Clonality</b>	Monoclonal Antibody
<b>Form</b>	Liquid
<b>Storage</b>	Store at 4°C short term. Aliquot and store at -20°C long term. Avoid freeze/thaw cycles.
<b>Buffer</b>	50mM Tris-Glycine(pH 7.4), 0.15M NaCl, 40% Glycerol, 0.01% Sodium azide and 0.05% BSA
<b>Purification</b>	Affinity Purified

## Immunogen

<b>Gene Name</b>	ENO3
<b>Alternative Names</b>	enolase 3; MSE; GSD13
<b>Gene ID</b>	2027
<b>SwissProt ID</b>	P13929

## Application

<b>Dilution Ratio</b>	WB: 1/500-1/1000 IF: 1/50-1/200
<b>Molecular Weight</b>	Calculated MW: 47 kDa; Observed MW: 47 kDa

## Background

**Product Name: ENO3 Rabbit Monoclonal Antibody**  
**Catalog #: AMRe01948**

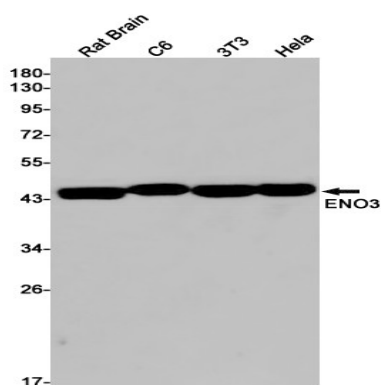


Appears to have a function in striated muscle development and regeneration.

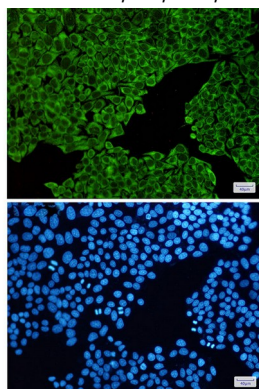
## Research Area

Signal Transduction

## Image Data



Western blot analysis of ENO3 in rat Brain, C6, 3T3, HeLa lysates using ENO3 antibody.



Immunocytochemistry analysis of ENO1/ENO2/ENO3(green) in HeLa using ENO1/ENO2/ENO3 antibody, and DAPI(blue)

## Note

For research use only.