

Product Name: Emerin Rabbit Monoclonal Antibody
Catalog #: AMRe01946



Summary

| | |
|------------------------|--|
| Production Name | Emerin Rabbit Monoclonal Antibody |
| Description | Recombinant Rabbit Monoclonal antibody |
| Host | Rabbit |
| Application | WB,IHC-F,IHC-P,ICC/IF |
| Reactivity | Human,Mouse |

Performance

| | |
|---------------------|--|
| Conjugation | Unconjugated |
| Modification | Unmodified |
| Isotype | IgG |
| Clonality | Monoclonal Antibody |
| Form | Liquid |
| Storage | Store at 4°C short term. Aliquot and store at -20°C long term. Avoid freeze/thaw cycles. |
| Buffer | 50mM Tris-Glycine(pH 7.4), 0.15M NaCl, 40% Glycerol, 0.01% Sodium azide and 0.05% BSA |
| Purification | Affinity Purified |

Immunogen

| | |
|--------------------------|------------------|
| Gene Name | EMD |
| Alternative Names | STA; EDMD; LEMD5 |
| Gene ID | 2010 |
| SwissProt ID | P50402 |

Application

| | |
|-------------------------|---|
| Dilution Ratio | WB: 1/500-1/1000 IHC: 1/50-1/100 IF: 1/50-1/200 |
| Molecular Weight | Calculated MW: 29 kDa; Observed MW: 35 kDa |

Background

Product Name: Emerin Rabbit Monoclonal Antibody
Catalog #: AMRe01946

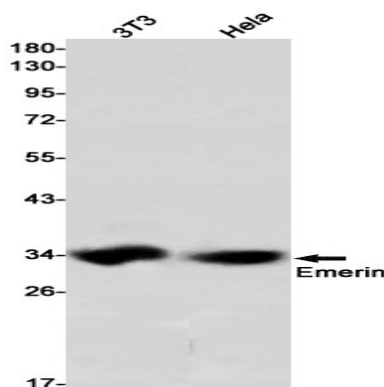


Emerin may regulate gene expression through binding to other transcriptional regulators. Emerin binds to β -catenin and inhibits its nuclear accumulation. Recent studies demonstrate that Emerin is required for HIV-1 infectivity.

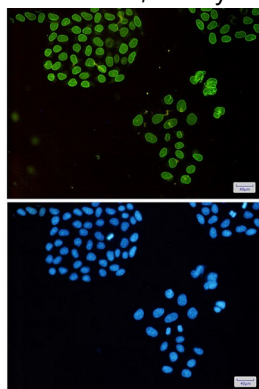
Research Area

Signal Transduction

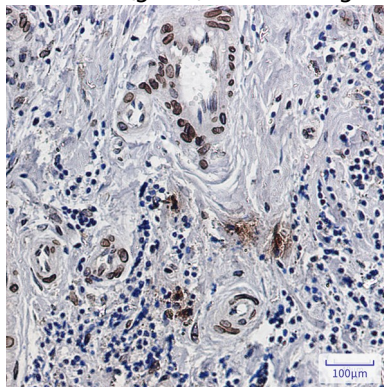
Image Data



Western blot analysis of Emerin in 3T3, HeLa lysates using Emerin antibody.



Immunocytochemistry analysis of Emerin(green) in HeLa using Emerin antibody, and DAPI(blue)



Immunohistochemistry analysis of paraffin-embedded Human breast cancer using Emerin antibody. High-pressure and temperature Sodium Citrate pH 6.0 was used for antigen retrieval.

Product Name: Emerin Rabbit Monoclonal Antibody
Catalog #: AMRe01946



Note

For research use only.