
Summary

Production Name	ELMO1 Rabbit Monoclonal Antibody
Description	Recombinant Rabbit Monoclonal antibody
Host	Rabbit
Application	WB,ICC/IF,IP
Reactivity	Human,Mouse,Rat

Performance

Conjugation	Unconjugated
Modification	Unmodified
Isotype	IgG
Clonality	Monoclonal Antibody
Form	Liquid
Storage	Store at 4°C short term. Aliquot and store at -20°C long term. Avoid freeze/thaw cycles.
Buffer	50mM Tris-Glycine(pH 7.4), 0.15M NaCl, 40% Glycerol, 0.01% Sodium azide and 0.05% BSA
Purification	Affinity Purified

Immunogen

Gene Name	ELMO1
Alternative Names	ELMO1; KIAA0281; Engulfment and cell motility protein 1; Protein ced-12 homolog
Gene ID	9844
SwissProt ID	Q92556

Application

Dilution Ratio	WB: 1/500-1/1000 IF: 1/50-1/200 IP: 1/20
Molecular Weight	Calculated MW: 84 kDa; Observed MW: 84 kDa

Background

Product Name: ELMO1 Rabbit Monoclonal Antibody
Catalog #: AMRe01944

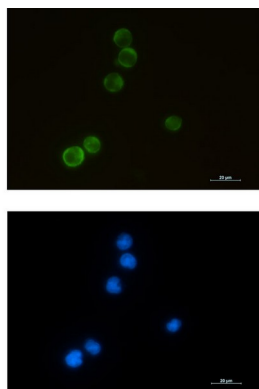


Involved in cytoskeletal rearrangements required for phagocytosis of apoptotic cells and cell motility. Acts in association with DOCK1 and CRK.

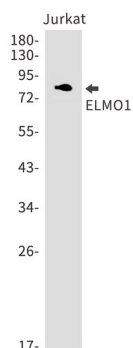
Research Area

Signal Transduction

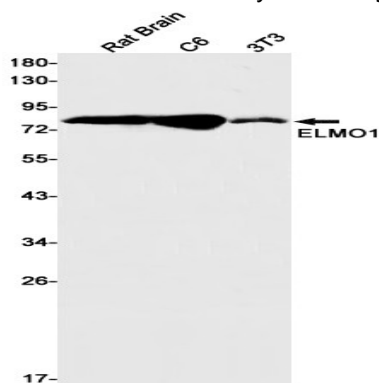
Image Data



Immunocytochemistry analysis of ELMO1 (green) in Jurkat using ELMO1 antibody, and DAPI (blue).



Western blot analysis of ELMO1 in Jurkat lysates using ELMO1 antibody.



Western blot analysis of ELMO1 in rat Brain, C6, 3T3 lysates using ELMO1 antibody

Product Name: ELMO1 Rabbit Monoclonal Antibody
Catalog #: AMRe01944



Note

For research use only.