

**Product Name: eIF4A3 Rabbit Monoclonal Antibody**  
**Catalog #: AMRe01938**



## Summary

<b>Production Name</b>	eIF4A3 Rabbit Monoclonal Antibody
<b>Description</b>	Recombinant Rabbit Monoclonal antibody
<b>Host</b>	Rabbit
<b>Application</b>	WB,IHC-F,IHC-P,ICC/IF,IP
<b>Reactivity</b>	Human,Rat,Hamster

## Performance

<b>Conjugation</b>	Unconjugated
<b>Modification</b>	Unmodified
<b>Isotype</b>	IgG
<b>Clonality</b>	Monoclonal Antibody
<b>Form</b>	Liquid
<b>Storage</b>	Store at 4°C short term. Aliquot and store at -20°C long term. Avoid freeze/thaw cycles.
<b>Buffer</b>	50mM Tris-Glycine(pH 7.4), 0.15M NaCl, 40% Glycerol, 0.01% Sodium azide and 0.05% BSA
<b>Purification</b>	Affinity Purified

## Immunogen

<b>Gene Name</b>	EIF4A3
<b>Alternative Names</b>	DDX48; EIF4A3; eIF4AIII; hNMP 265; NMP 265; NMP265; NUK34
<b>Gene ID</b>	9775
<b>SwissProt ID</b>	P38919

## Application

<b>Dilution Ratio</b>	WB: 1/500-1/1000 IHC: 1/50-1/100 IF: 1/50-1/200 IP: 1/20
<b>Molecular Weight</b>	Calculated MW: 47 kDa; Observed MW: 47 kDa

## Background

**Product Name: eIF4A3 Rabbit Monoclonal Antibody**  
**Catalog #: AMRe01938**

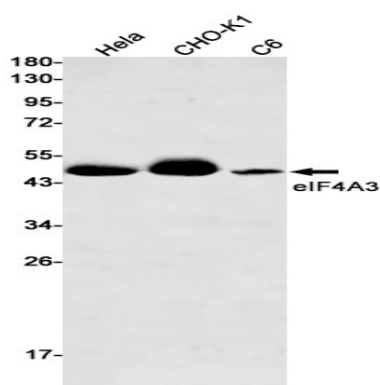


ATP-dependent RNA helicase. Component of a splicing-dependent multiprotein exon junction complex (EJC) deposited at splice junction on mRNAs. The EJC is a dynamic structure consisting of a few core proteins and several more peripheral nuclear and cytoplasmic associated factors that join the complex only transiently either during EJC assembly or during subsequent mRNA metabolism.

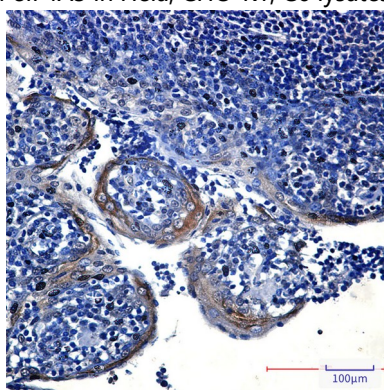
## Research Area

Epigenetics and Nuclear Signaling

## Image Data



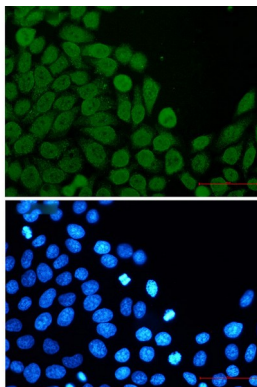
Western blot analysis of eIF4A3 in HeLa, CHO-K1, C6 lysates using eIF4A3 antibody.



Immunohistochemistry analysis of paraffin-embedded Human tonsil using Eif4a3 antibody. High-pressure and temperature Sodium Citrate pH 6.0 was used for antigen retrieval.

**Product Name: eIF4A3 Rabbit Monoclonal Antibody**  
**Catalog #: AMRe01938**

---



Immunocytochemistry analysis of Eif4a3 (green) in Hela using Eif4a3 antibody, and DAPI(blue)

### **Note**

For research use only.