

## Summary

<b>Production Name</b>	DISC1 Rabbit Monoclonal Antibody
<b>Description</b>	Recombinant Rabbit Monoclonal antibody
<b>Host</b>	Rabbit
<b>Application</b>	WB,IHC-F,IHC-P,ICC/IF,IP
<b>Reactivity</b>	Human,Mouse,Rat

## Performance

<b>Conjugation</b>	Unconjugated
<b>Modification</b>	Unmodified
<b>Isotype</b>	IgG
<b>Clonality</b>	Monoclonal Antibody
<b>Form</b>	Liquid
<b>Storage</b>	Store at 4°C short term. Aliquot and store at -20°C long term. Avoid freeze/thaw cycles.
<b>Buffer</b>	50mM Tris-Glycine(pH 7.4), 0.15M NaCl, 40% Glycerol, 0.01% Sodium azide and 0.05% BSA
<b>Purification</b>	Affinity Purified

## Immunogen

<b>Gene Name</b>	DISC1
<b>Alternative Names</b>	C1orf136; DISC1; KIAA0457; RP4-730B13.1; SCZD9
<b>Gene ID</b>	27185
<b>SwissProt ID</b>	Q9NRI5

## Application

<b>Dilution Ratio</b>	WB: 1/500-1/1000 IHC: 1/50-1/100 IF: 1/50-1/200 IP: 1/20
<b>Molecular Weight</b>	Calculated MW: 94 kDa; Observed MW: 94 kDa

## Background

**Product Name: DISC1 Rabbit Monoclonal Antibody**  
**Catalog #: AMRe01911**

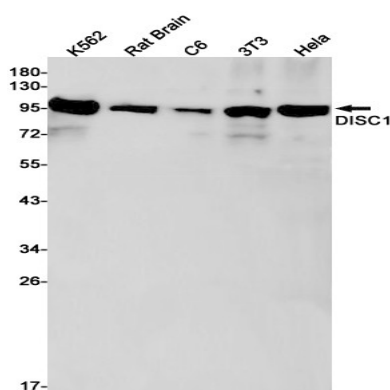


Involved in the regulation of multiple aspects of embryonic and adult neurogenesis. Required for neural progenitor proliferation in the ventricular/subventricular zone during embryonic brain development and in the adult dentate gyrus of the hippocampus.

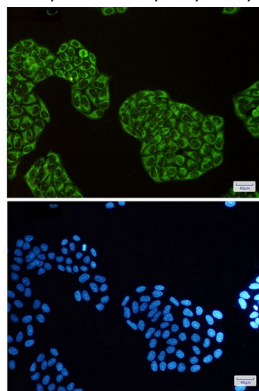
## Research Area

Neuroscience

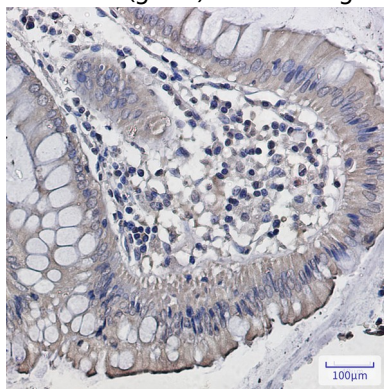
## Image Data



Western blot analysis of DISC1 in K562, rat Brain, C6, 3T3, Hela lysates using DISC1 antibody.



Immunocytochemistry analysis of DISC1(green) in Hela using DISC1 antibody, and DAPI(blue)



Immunohistochemistry analysis of paraffin-embedded Human colon cancer using DISC1 antibody. High-pressure and

**Product Name: DISC1 Rabbit Monoclonal Antibody**  
**Catalog #: AMRe01911**

---



temperature Sodium Citrate pH 6.0 was used for antigen retrieval.

**Note**

For research use only.