

**Product Name: Cytochrome P450 Reductase Rabbit  
Monoclonal Antibody  
Catalog #: AMRe01883**

---



## Summary

<b>Production Name</b>	Cytochrome P450 Reductase Rabbit Monoclonal Antibody
<b>Description</b>	Recombinant Rabbit Monoclonal antibody
<b>Host</b>	Rabbit
<b>Application</b>	WB,IHC-F,IHC-P,ICC/IF
<b>Reactivity</b>	Human,Mouse,Rat

## Performance

<b>Conjugation</b>	Unconjugated
<b>Modification</b>	Unmodified
<b>Isotype</b>	IgG
<b>Clonality</b>	Monoclonal Antibody
<b>Form</b>	Liquid
<b>Storage</b>	Store at 4°C short term. Aliquot and store at -20°C long term. Avoid freeze/thaw cycles.
<b>Buffer</b>	50mM Tris-Glycine(pH 7.4), 0.15M NaCl, 40% Glycerol, 0.01% Sodium azide and 0.05% BSA
<b>Purification</b>	Affinity Purified

## Immunogen

<b>Gene Name</b>	POR
<b>Alternative Names</b>	CPR; CYPOR; P450R; por
<b>Gene ID</b>	5447
<b>SwissProt ID</b>	P16435

## Application

<b>Dilution Ratio</b>	WB: 1/500-1/1000 IHC: 1/50-1/100 IF: 1/50-1/200
<b>Molecular Weight</b>	Calculated MW: 77 kDa; Observed MW: 77 kDa

**Product Name: Cytochrome P450 Reductase Rabbit  
Monoclonal Antibody**  
**Catalog #: AMRe01883**



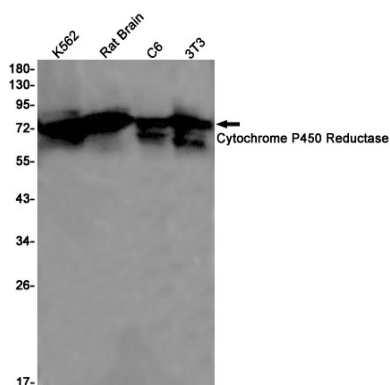
## Background

This enzyme is required for electron transfer from NADP to cytochrome P450 in microsomes. It can also provide electron transfer to heme oxygenase and cytochrome B5.

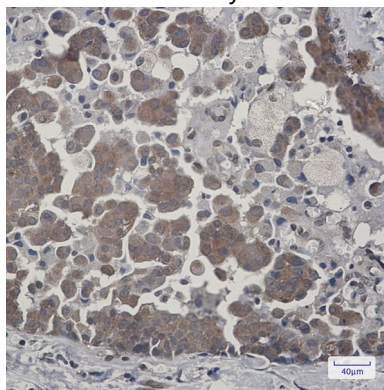
## Research Area

Cardiovascular

## Image Data



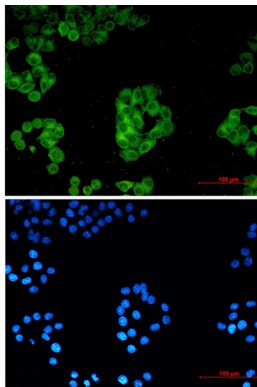
Western blot analysis of Cytochrome P450 Reductase in K562, rat Brain, C6, 3T3 lysates using Cytochrome P450 Reductase antibody.



Immunohistochemistry analysis of paraffin-embedded Human breast cancer using Cytochrome P450 Reductase antibody. High-pressure and temperature Sodium Citrate pH 6.0 was used for antigen retrieval.

**Product Name: Cytochrome P450 Reductase Rabbit  
Monoclonal Antibody  
Catalog #: AMRe01883**

---



Immunocytochemistry analysis of Cytochrome P450 Reductase (green) in Hela using Cytochrome P450 Reductase antibody, and DAPI (blue)

### **Note**

For research use only.