

**Product Name: Cullin 4A/4B Rabbit Monoclonal Antibody**  
**Catalog #: AMRe01865**

---

## Summary

<b>Production Name</b>	Cullin 4A/4B Rabbit Monoclonal Antibody
<b>Description</b>	Recombinant Rabbit Monoclonal antibody
<b>Host</b>	Rabbit
<b>Application</b>	WB,IHC-P
<b>Reactivity</b>	Human,Hamster,Rat

## Performance

<b>Conjugation</b>	Unconjugated
<b>Modification</b>	Unmodified
<b>Isotype</b>	IgG
<b>Clonality</b>	Monoclonal Antibody
<b>Form</b>	Liquid
<b>Storage</b>	Store at 4°C short term. Aliquot and store at -20°C long term. Avoid freeze/thaw cycles.
<b>Buffer</b>	50mM Tris-Glycine(pH 7.4), 0.15M NaCl, 40% Glycerol, 0.01% Sodium azide and 0.05% BSA
<b>Purification</b>	Affinity Purified

## Immunogen

<b>Gene Name</b>	CUL4B
<b>Alternative Names</b>	CUL4B; KIAA0695; Cullin-4B; CUL-4B
<b>Gene ID</b>	8450
<b>SwissProt ID</b>	Q13620

## Application

<b>Dilution Ratio</b>	WB: 1/500-1/1000 IHC: 1/50-1/100
<b>Molecular Weight</b>	Calculated MW: 104 kDa; Observed MW: 88,104 kDa

**Product Name: Cullin 4A/4B Rabbit Monoclonal Antibody**  
**Catalog #: AMRe01865**



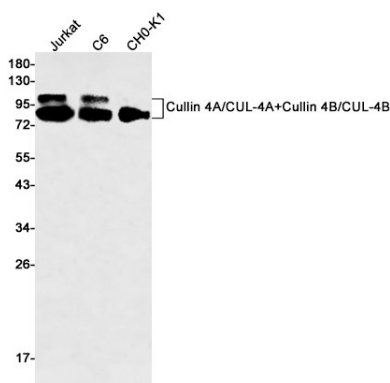
## Background

Core component of multiple cullin-RING-based E3 ubiquitin-protein ligase complexes which mediate the ubiquitination and subsequent proteasomal degradation of target proteins. The functional specificity of the E3 ubiquitin-protein ligase complex depends on the variable substrate recognition subunit. CUL4B may act within the complex as a scaffold protein, contributing to catalysis through positioning of the substrate and the ubiquitin-conjugating enzyme. Plays a role as part of the E3 ubiquitin-protein ligase complex in polyubiquitination of CDT1, histone H2A, histone H3 and histone H4 in response to radiation-induced DNA damage. Targeted to UV damaged chromatin by DDB2 and may be important for DNA repair and DNA replication. Required for ubiquitination of cyclin E, and consequently, normal G1 cell cycle progression. Regulates the mammalian target-of-rapamycin (mTOR) pathway involved in control of cell growth, size and metabolism. Specific CUL4B regulation of the mTORC1-mediated pathway is dependent upon 26S proteasome function and requires interaction between CUL4B and MLST8.

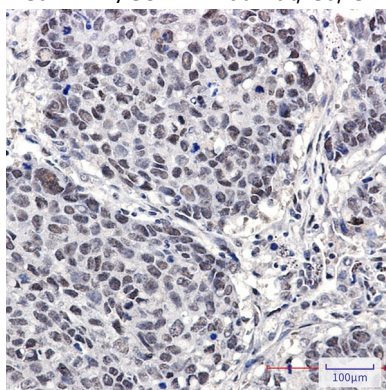
## Research Area

Cell Biology

## Image Data



Western blot analysis of Cullin 4A/CUL4A+Cullin 4B/CUL4B in Jurkat, C6, CHO-K1 lysates using Cullin 4A/4B antibody.



Immunohistochemistry analysis of paraffin-embedded Human lung cancer using Cullin 4A/B antibody. High-pressure and

**Product Name: Cullin 4A/4B Rabbit Monoclonal  
Antibody**  
**Catalog #: AMRe01865**



---

temperature Sodium Citrate pH 6.0 was used for antigen retrieval.

**Note**

For research use only.