

Product Name: Cortactin Rabbit Monoclonal Antibody
Catalog #: AMRe01842



Summary

Production Name	Cortactin Rabbit Monoclonal Antibody
Description	Recombinant Rabbit Monoclonal antibody
Host	Rabbit
Application	WB,IHC-F,IHC-P,ICC/IF,IP
Reactivity	Human,Mouse,Rat

Performance

Conjugation	Unconjugated
Modification	Unmodified
Isotype	IgG
Clonality	Monoclonal Antibody
Form	Liquid
Storage	Store at 4°C short term. Aliquot and store at -20°C long term. Avoid freeze/thaw cycles.
Buffer	50mM Tris-Glycine(pH 7.4), 0.15M NaCl, 40% Glycerol, 0.01% Sodium azide and 0.05% BSA
Purification	Affinity Purified

Immunogen

Gene Name	CTTN
Alternative Names	CTTN; EMS1; Src substrate cortactin; Amplexin; Oncogene EMS1
Gene ID	2017
SwissProt ID	Q14247

Application

Dilution Ratio	WB: 1/500-1/1000 IHC: 1/50-1/100 IF: 1/50-1/200 IP: 1/20
Molecular Weight	Calculated MW: 62 kDa; Observed MW: 80-85 kDa

Background

Product Name: Cortactin Rabbit Monoclonal Antibody
Catalog #: AMRe01842

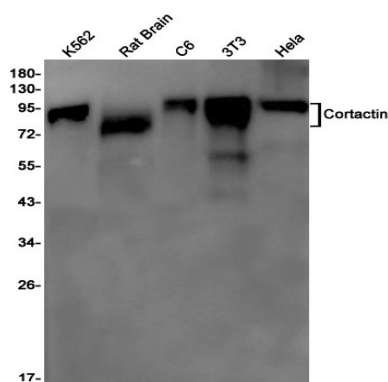


Cortactin a cytoskeletal protein that that is involved in coordinating actin reorganization during cell movement. Localizes at the leading edge of lamellipodia during cell migration. Its amino-terminal acidic domain associates with the Arp2/3 and WASP complex at F-actin branches.

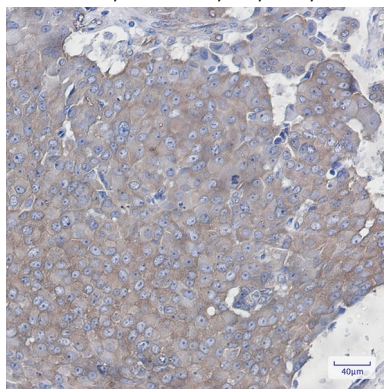
Research Area

Signal Transduction

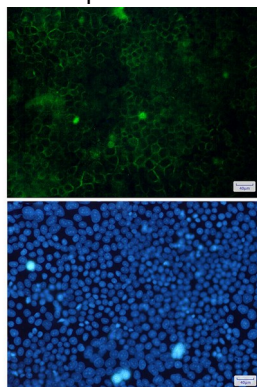
Image Data



Western blot analysis of Cortactin in K562, rat Brain, C6, 3T3, HeLa lysates using Cortactin antibody.



Immunohistochemistry analysis of paraffin-embedded Human breast cancer using Cortactin antibody. High-pressure and temperature Sodium Citrate pH 6.0 was used for antigen retrieval.



Product Name: Cortactin Rabbit Monoclonal Antibody
Catalog #: AMRe01842



Immunocytochemistry analysis of Cortactin(green) in Hela using Cortactin antibody, and DAPI(blue)

Note

For research use only.