

Product Name: Clusterin alpha Chain Rabbit Monoclonal Antibody
Catalog #: AMRe01836

Summary

Production Name	Clusterin alpha Chain Rabbit Monoclonal Antibody
Description	Recombinant Rabbit Monoclonal antibody
Host	Rabbit
Application	WB,IP
Reactivity	Rat

Performance

Conjugation	Unconjugated
Modification	Unmodified
Isotype	IgG
Clonality	Monoclonal Antibody
Form	Liquid
Storage	Store at 4°C short term. Aliquot and store at -20°C long term. Avoid freeze/thaw cycles.
Buffer	50mM Tris-Glycine(pH 7.4), 0.15M NaCl, 40% Glycerol, 0.01% Sodium azide and 0.05% BSA
Purification	Affinity Purified

Immunogen

Gene Name	Clu
Alternative Names	Clj; ApoJ; Sgp2; SP-40; Sgp-2; Sugp-2; A1893575; D14Ucla3
Gene ID	12759.0
SwissProt ID	Q06890

Application

Dilution Ratio	WB: 1/500-1/1000 IP: 1/20
Molecular Weight	Calculated MW: 52 kDa; Observed MW: 42 kDa

Product Name: Clusterin alpha Chain Rabbit Monoclonal Antibody
Catalog #: AMRe01836

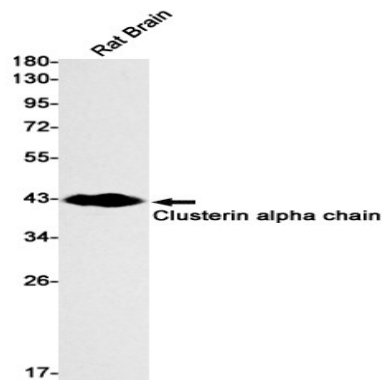
Background

Functions as extracellular chaperone that prevents aggregation of nonnative proteins. Prevents stress-induced aggregation of blood plasma proteins. Inhibits formation of amyloid fibrils by APP, APOC2, B2M, CALCA, CSN3, SNCA and aggregation-prone LYZ variants (in vitro). Does not require ATP. Maintains partially unfolded proteins in a state appropriate for subsequent refolding by other chaperones, such as HSPA8/HSC70. Does not refold proteins by itself.

Research Area

Immunology

Image Data



Western blot analysis of Clusterin alpha chain in rat Brain lysates using Clusterin alpha Chain antibody.

Note

For research use only.