

Product Name: CDC7 Rabbit Monoclonal Antibody
Catalog #: AMRe01804



Summary

Production Name	CDC7 Rabbit Monoclonal Antibody
Description	Recombinant Rabbit Monoclonal antibody
Host	Rabbit
Application	WB,IP
Reactivity	Human,Hamster

Performance

Conjugation	Unconjugated
Modification	Unmodified
Isotype	IgG
Clonality	Monoclonal Antibody
Form	Liquid
Storage	Store at 4°C short term. Aliquot and store at -20°C long term. Avoid freeze/thaw cycles.
Buffer	50mM Tris-Glycine(pH 7.4), 0.15M NaCl, 40% Glycerol, 0.01% Sodium azide and 0.05% BSA
Purification	Affinity Purified

Immunogen

Gene Name	CDC7
Alternative Names	Cell division cycle 7-related protein kinase; EC 2.7.11.1; CDC7-related kinase; HsCdc7; huCdc7; CDC7; CDC7L1; Hsk1; CDC7 kinase
Gene ID	8317
SwissProt ID	O00311

Application

Dilution Ratio	WB: 1/500-1/1000 IP: 1/20
Molecular Weight	Calculated MW: 64 kDa; Observed MW: 64 kDa

Product Name: CDC7 Rabbit Monoclonal Antibody
Catalog #: AMRe01804



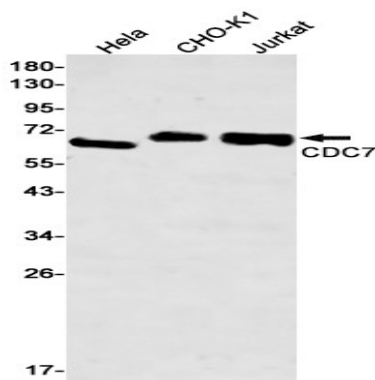
Background

DNA replication in eukaryotic cells is dependent on the phosphorylation of the pre-replicative complex (preRC) at the origin of replication. Two complexes of proteins mediate this event, the cyclin dependent kinase (CDK) complex, and the Cdc7 kinase-ASK complex. Human Cdc7 kinase consists of 574 amino acids with a molecular weight of 55 kDa. The activity of Cdc7 kinase oscillates during cell cycle. The major targets of Cdc7 kinase are proteins that belong to the MCM complex (mini chromosome maintenance proteins).

Research Area

Cell Biology

Image Data



Western blot analysis of CDC7 in HeLa, CHO-K1, Jurkat lysates using CDC7 antibody.

Note

For research use only.